

California School Board Association

Demographic Trends for School Districts



Shelley Lapkoff, Ph.D.
Lapkoff & Gobalet
Demographic Research, Inc.
www.Demographers.com

December 3, 2004

Key Demographic Factors Affecting School Districts

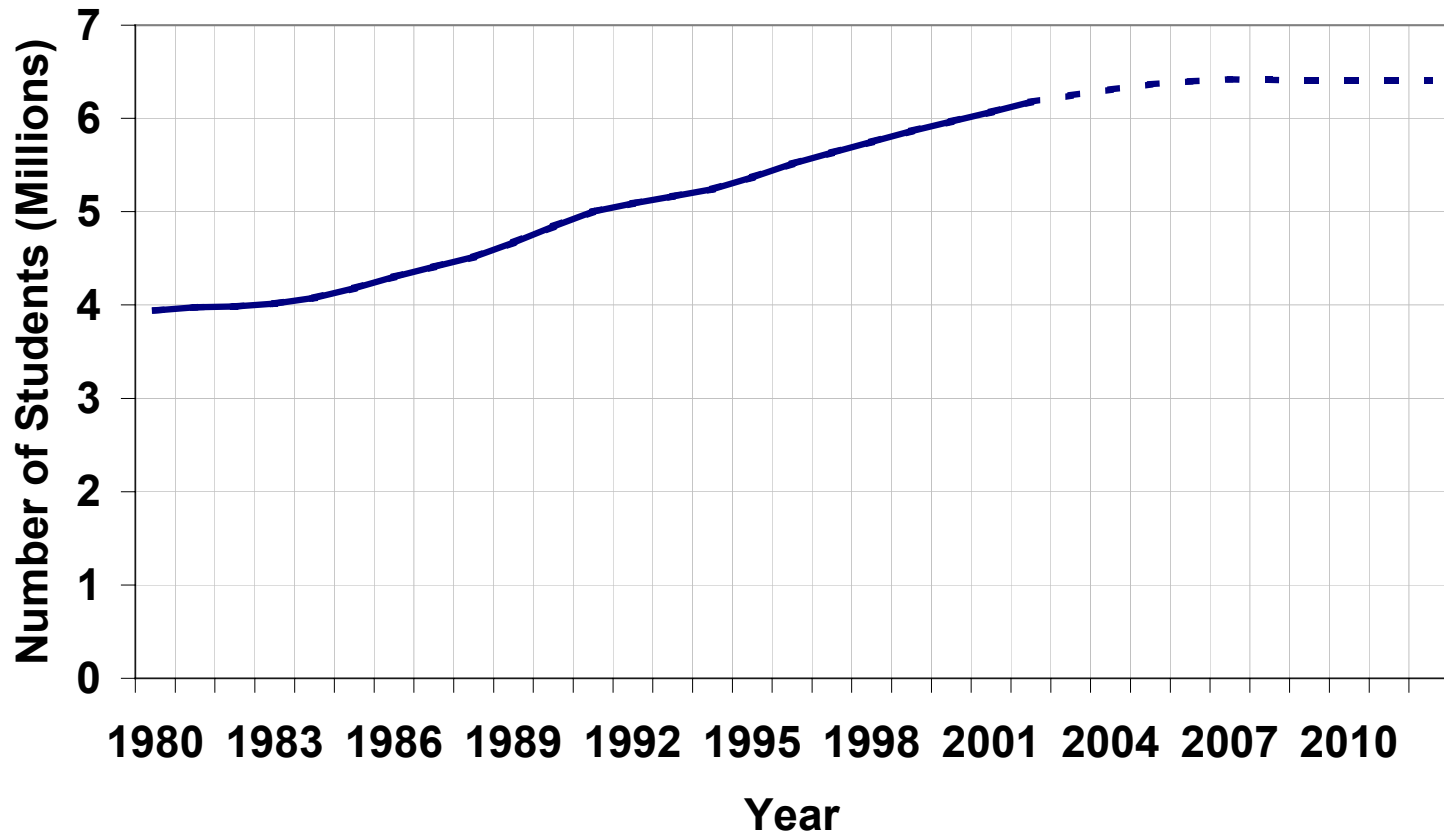
- **Overall enrollment trends**
- **Births and ethnic shifts**
- **Housing growth**
- **Migration**

Overall Enrollment Trends

- **After decades of strong enrollment growth, many districts are now experiencing stable or declining enrollments**
- **Many district staff members – superintendents and business managers, etc – have worked in growing school districts for their entire career. Stable and declining enrollments require a different orientation.**
- **Different issues face districts with declining enrollment:**
 - **Instead of scrambling to find more facility space or building new schools, what to do with excess capacity and should you close schools?**
 - **Reducing the teaching staff or district office staff; cutting programs**

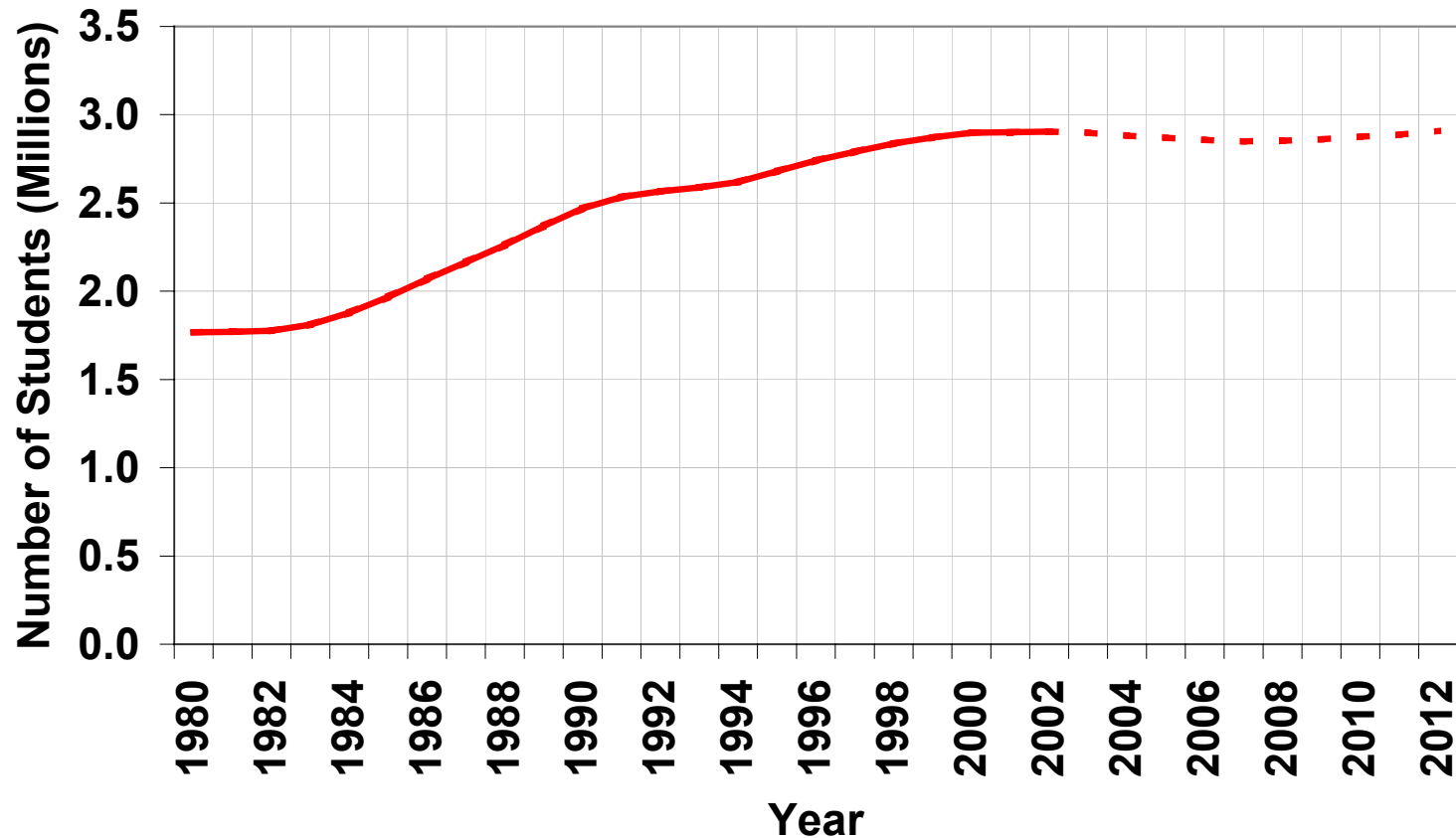
California's K-12 enrollments increased from 4 to 6 million between 1980 and 2000, but state demographers now predict stable enrollments

California K-12 Enrollments



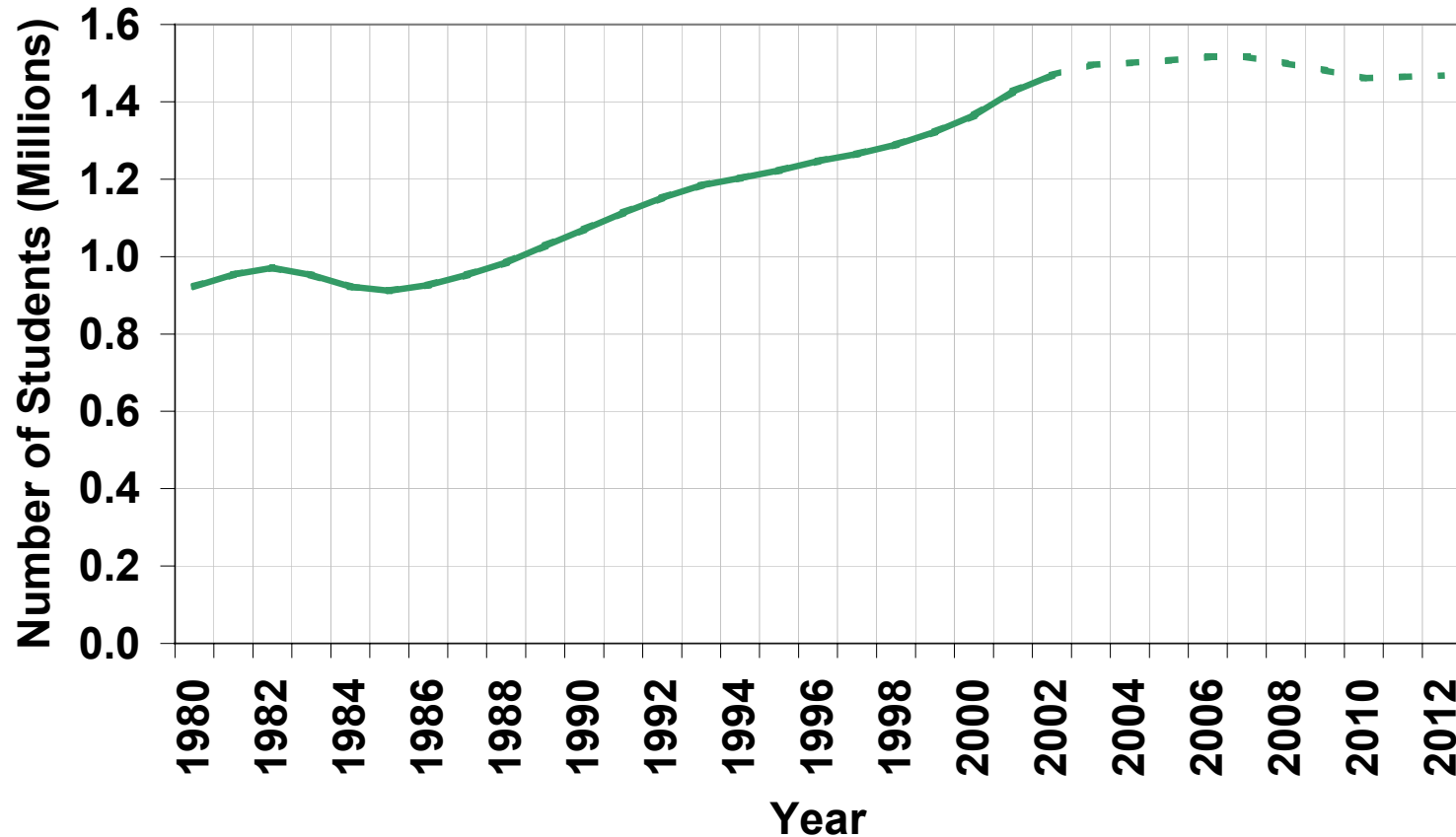
Many districts have already experienced declining or stabilizing elementary enrollments

K-5 Enrollments Forecasted by State Demographers



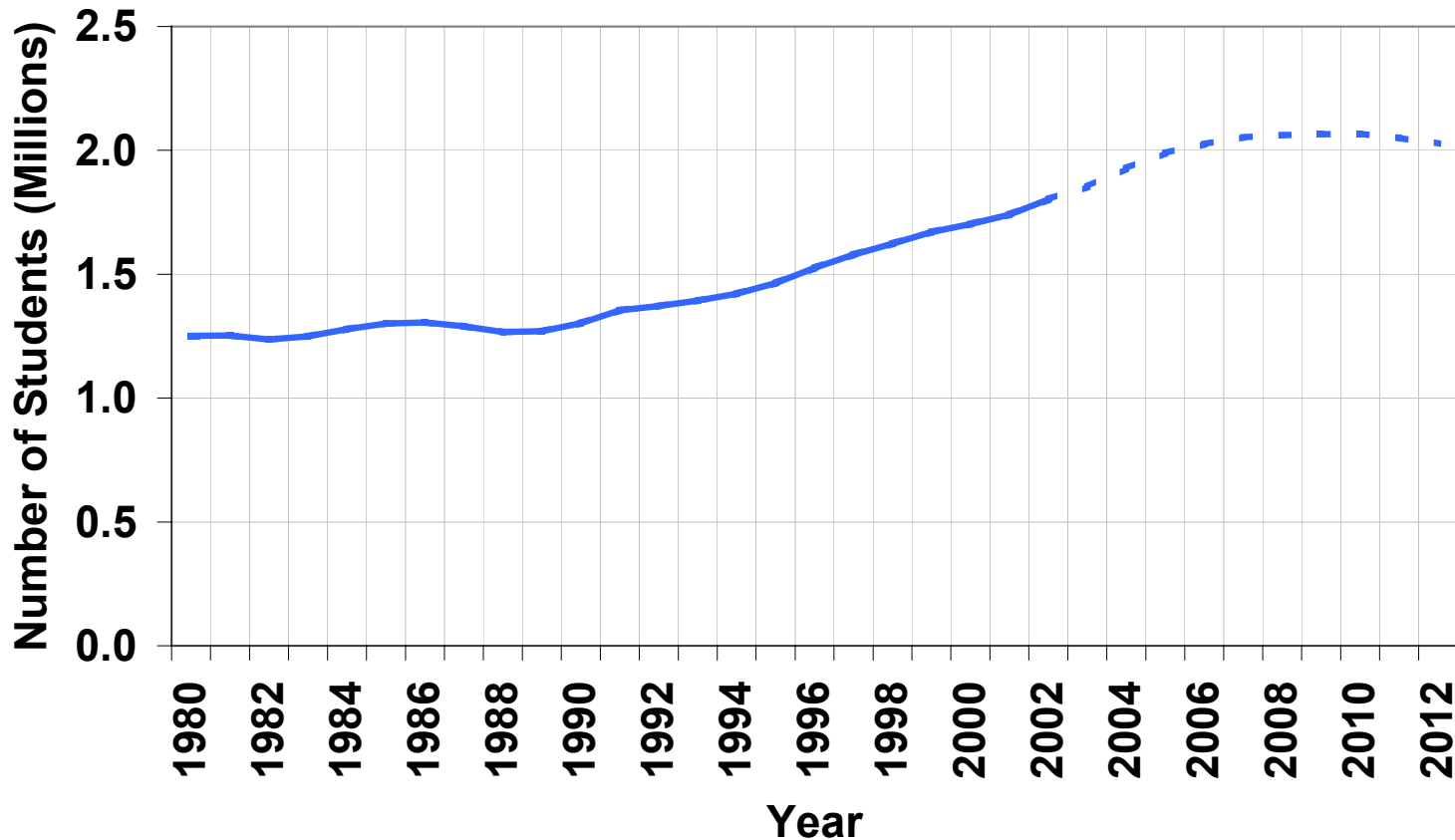
Middle school enrollments have increased by 50 percent since 1985

6-8 Enrollments Forecasted by State Demographers



High school enrollment is still expected to increase during the decade

9-12 Enrollments Forecasted by State Demographers



Sources of Enrollment Change



Births



New Housing



Housing Turnover

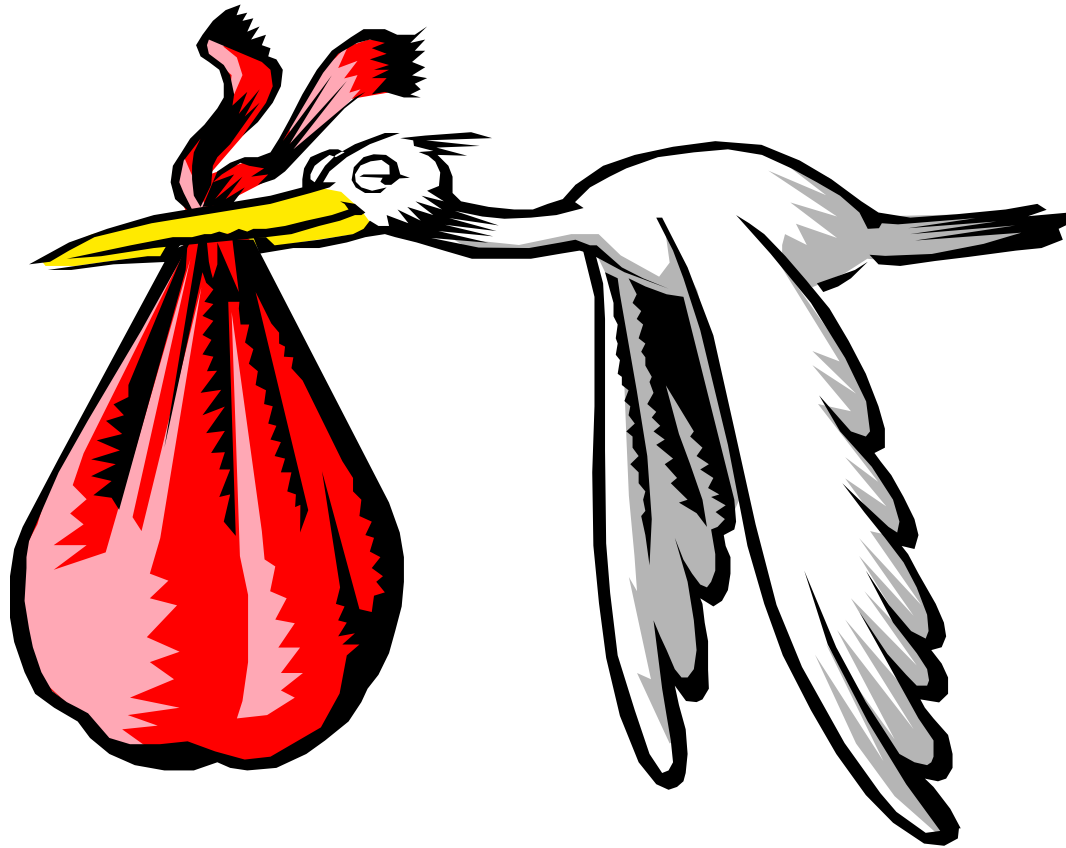


Transfers to or from private schools

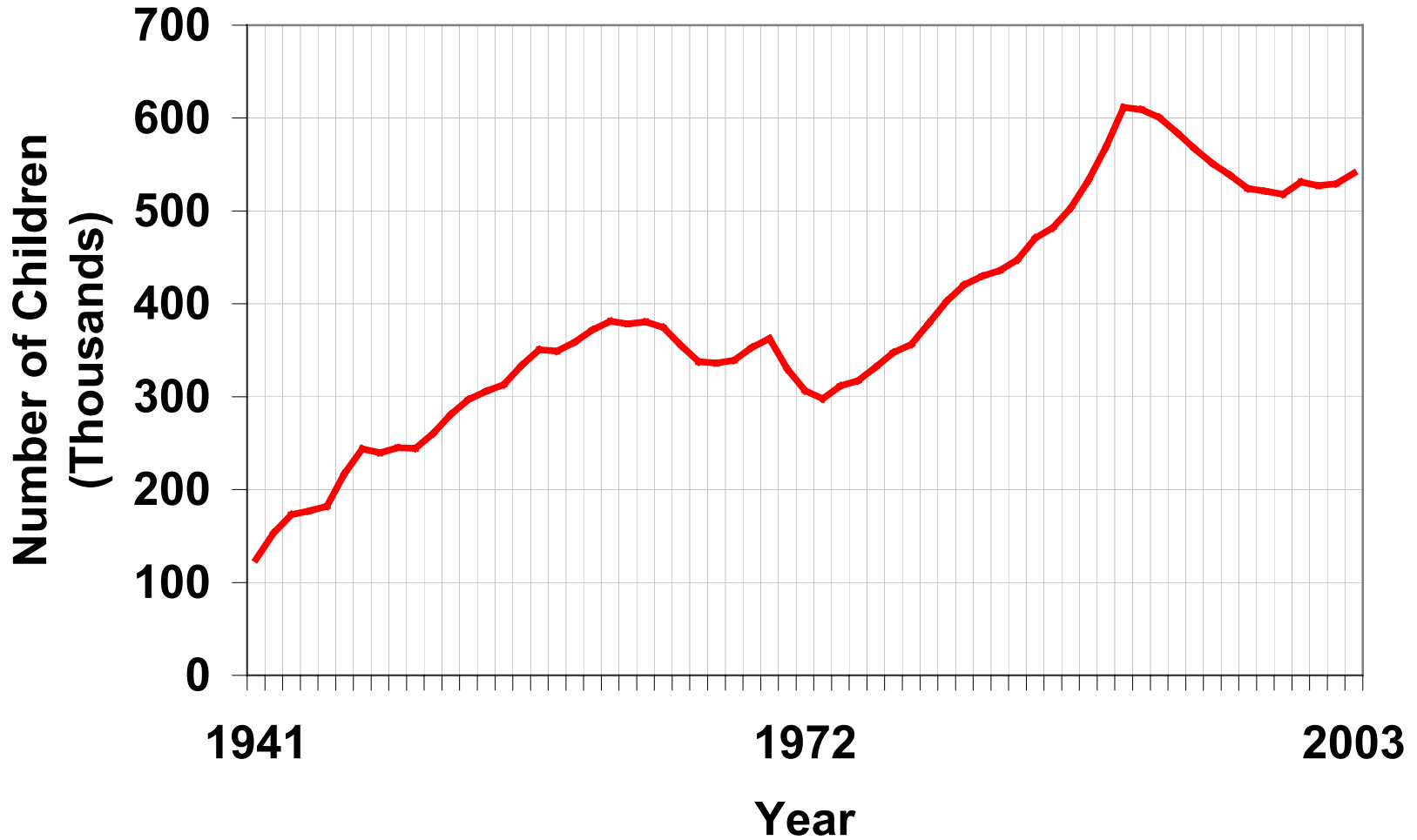
Just a few factors affect enrollments, but understanding their movements can be complex

- **Births – affected by population size, ethnicity, birth rates**
- **Migration – affected by the economy, housing supply, “family-(un)friendly” conditions, types of jobs available, quality of life, support networks (“chain migration”)**
- **Housing growth – affected by land availability, pressure from housing prices, and politics of slow and no growth advocates**

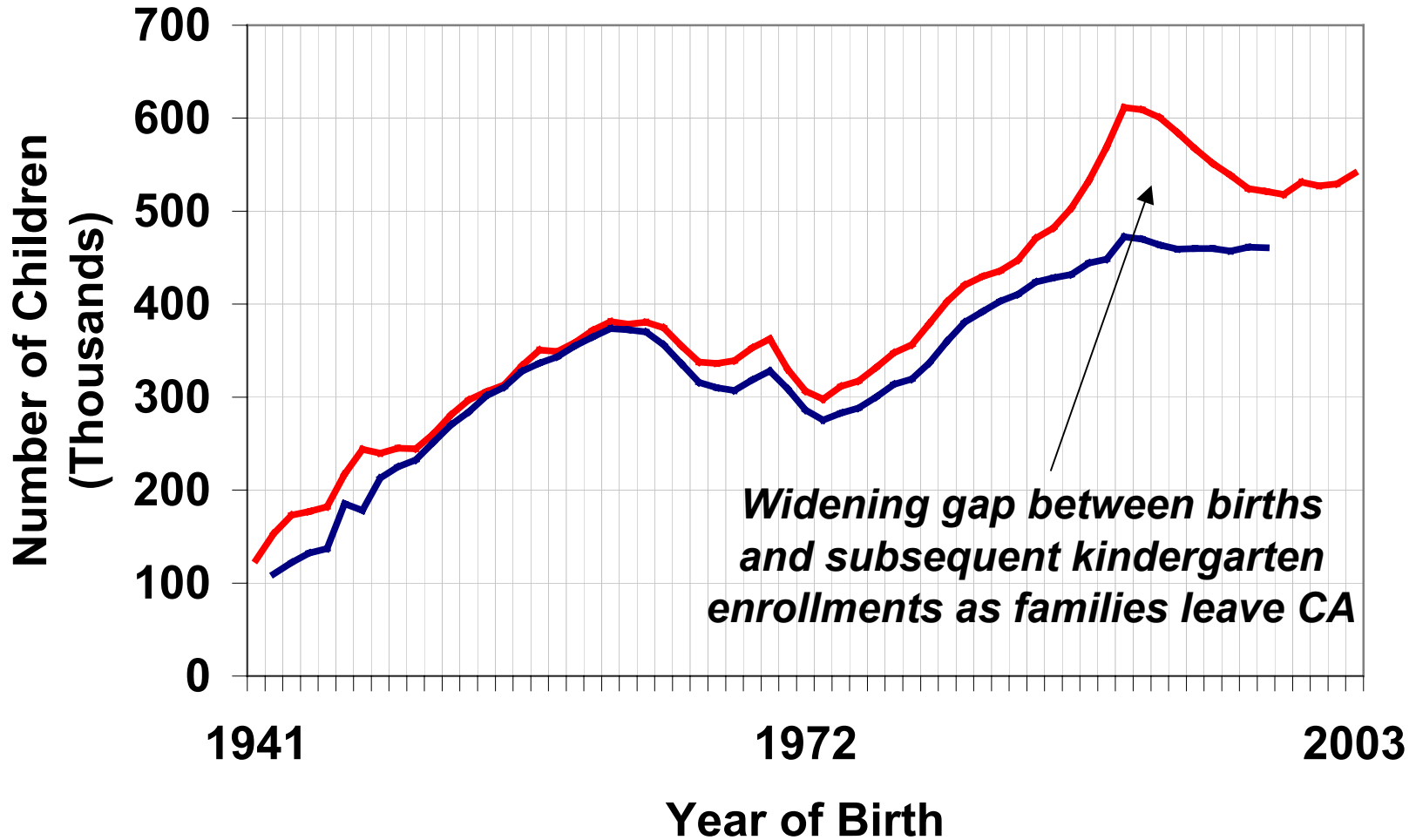
Birth Trends



California Births, 1941 - 2003



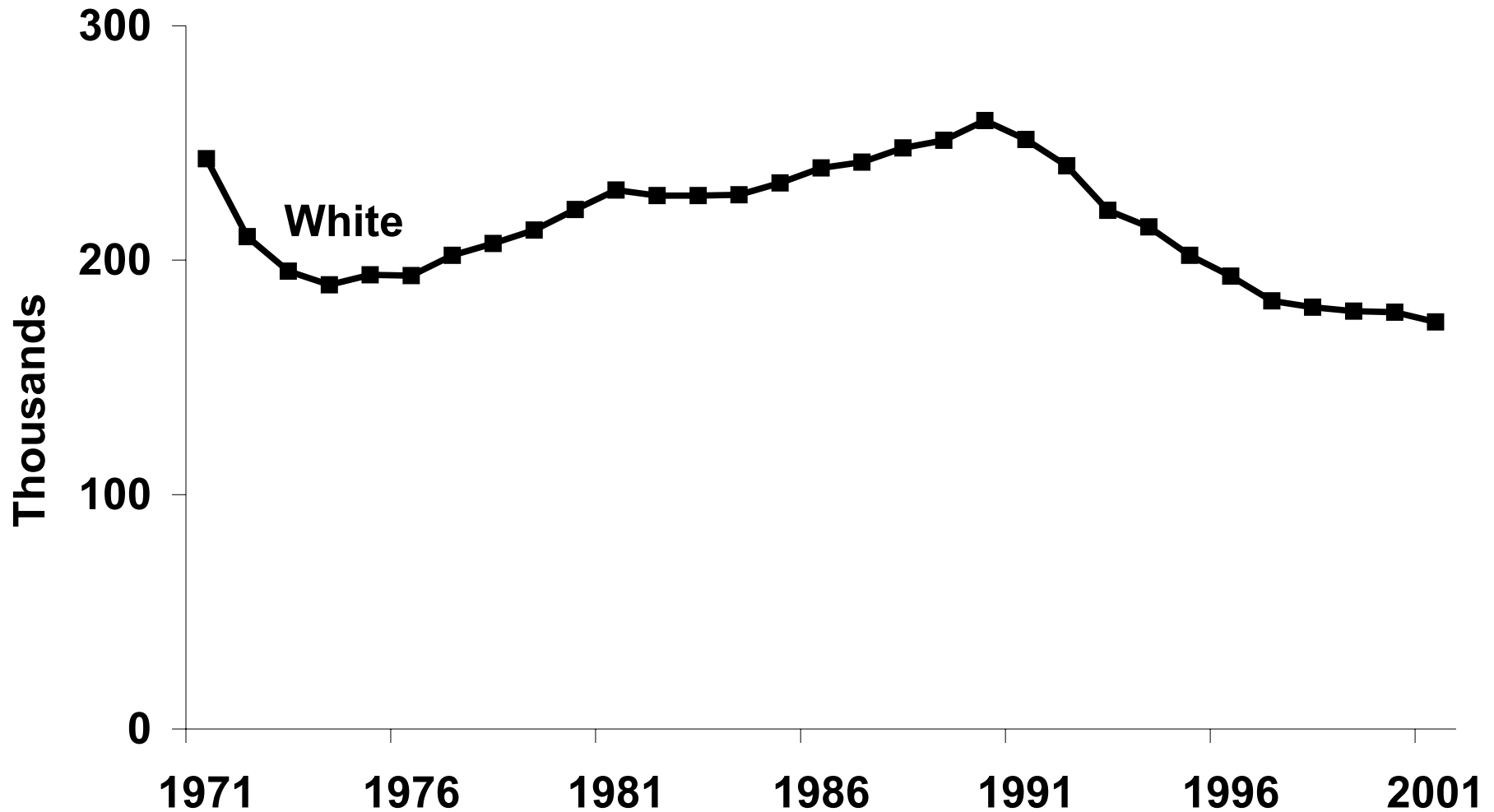
California Births with Kindergarten Enrollments, Lagged 5 Years



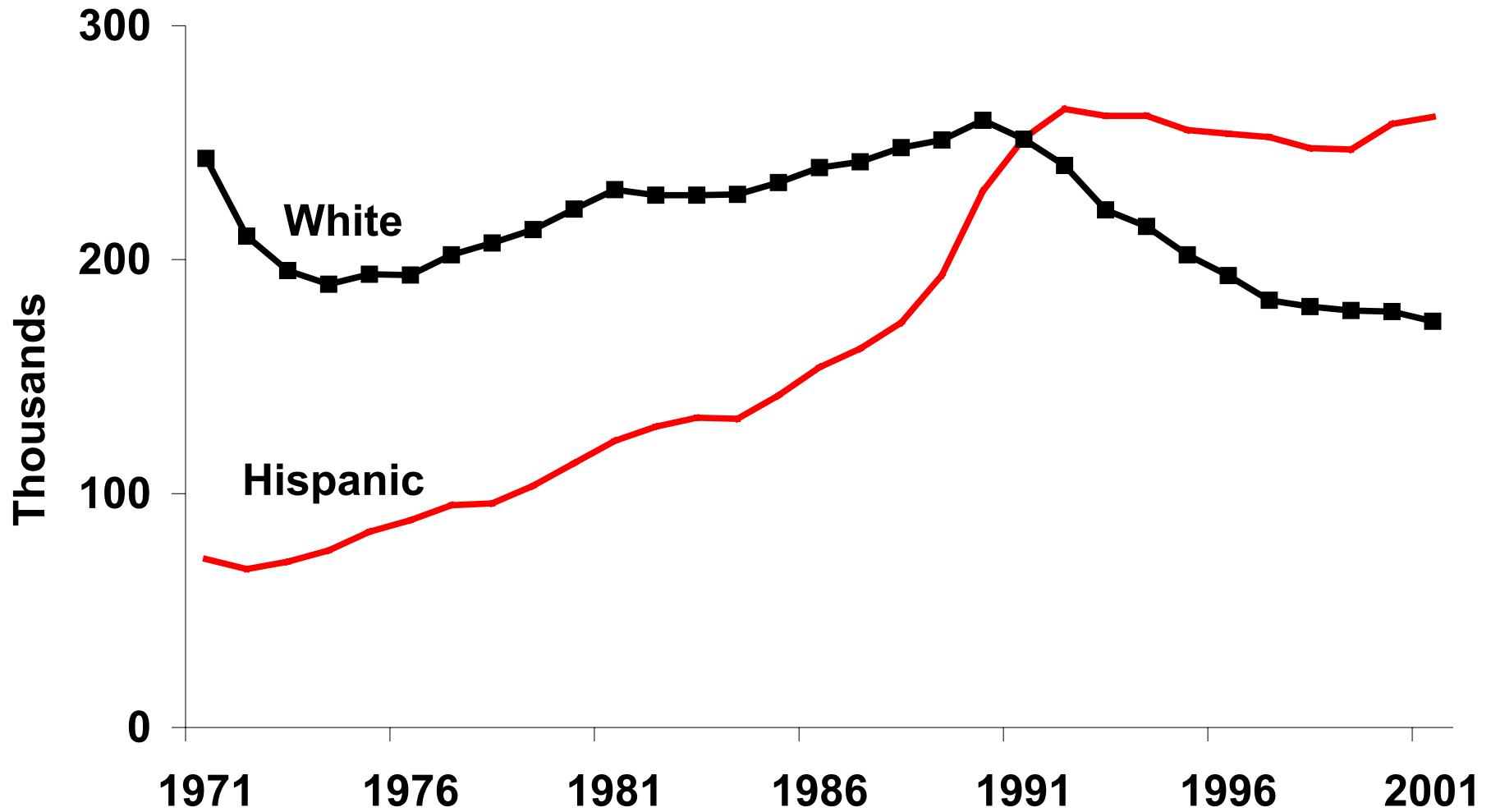
Why Births Declined After 1990

- **Post WWII Baby Boom Reached low birth ages – half were over age 35**
- **California's recession caused many families to leave California**
- **Teenage pregnancies dropped, especially among African Americans**
- **All ethnic groups experienced a slowdown in numbers of births after 1990**

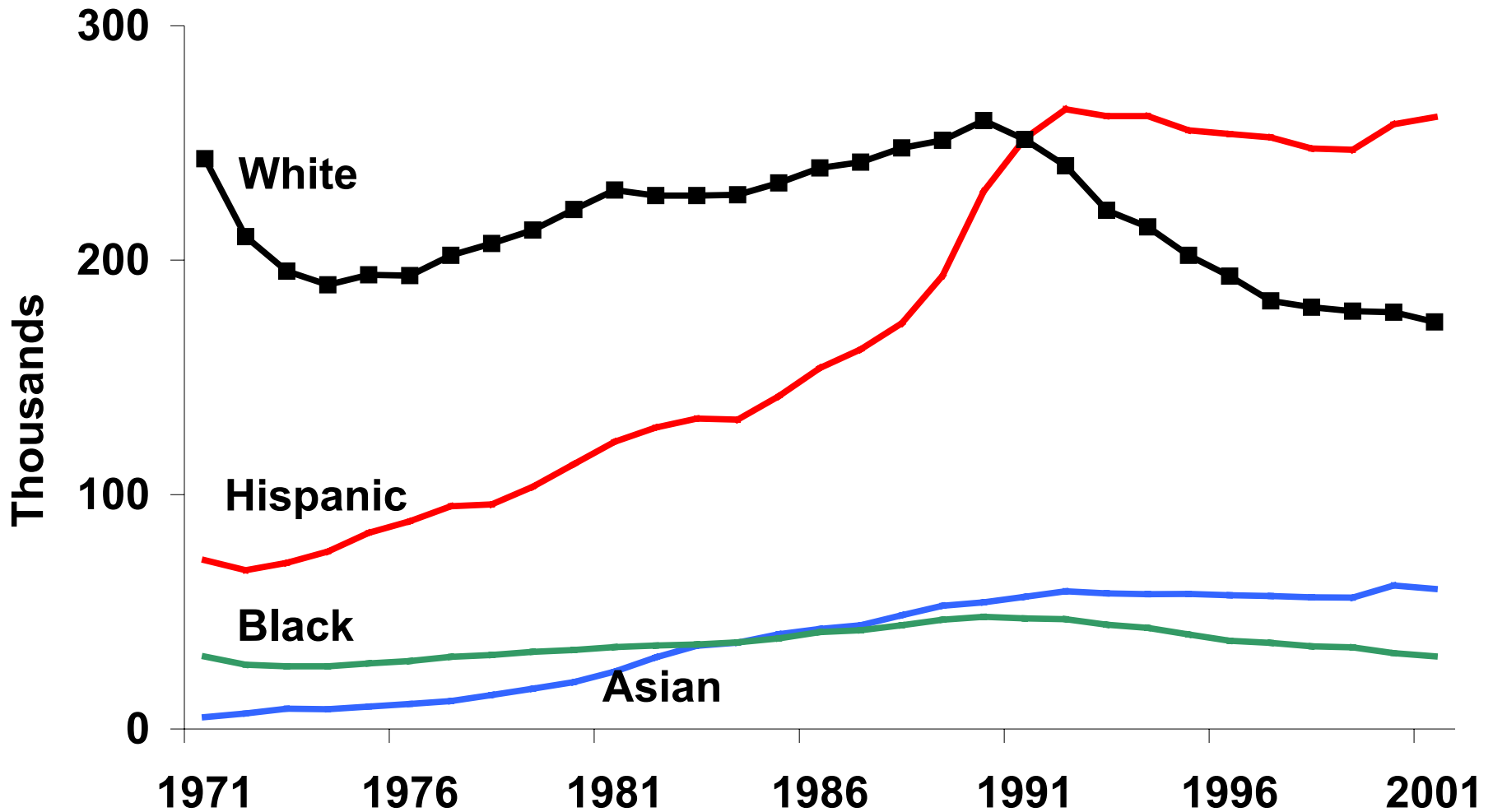
California Births by Ethnicity



California Births by Ethnicity

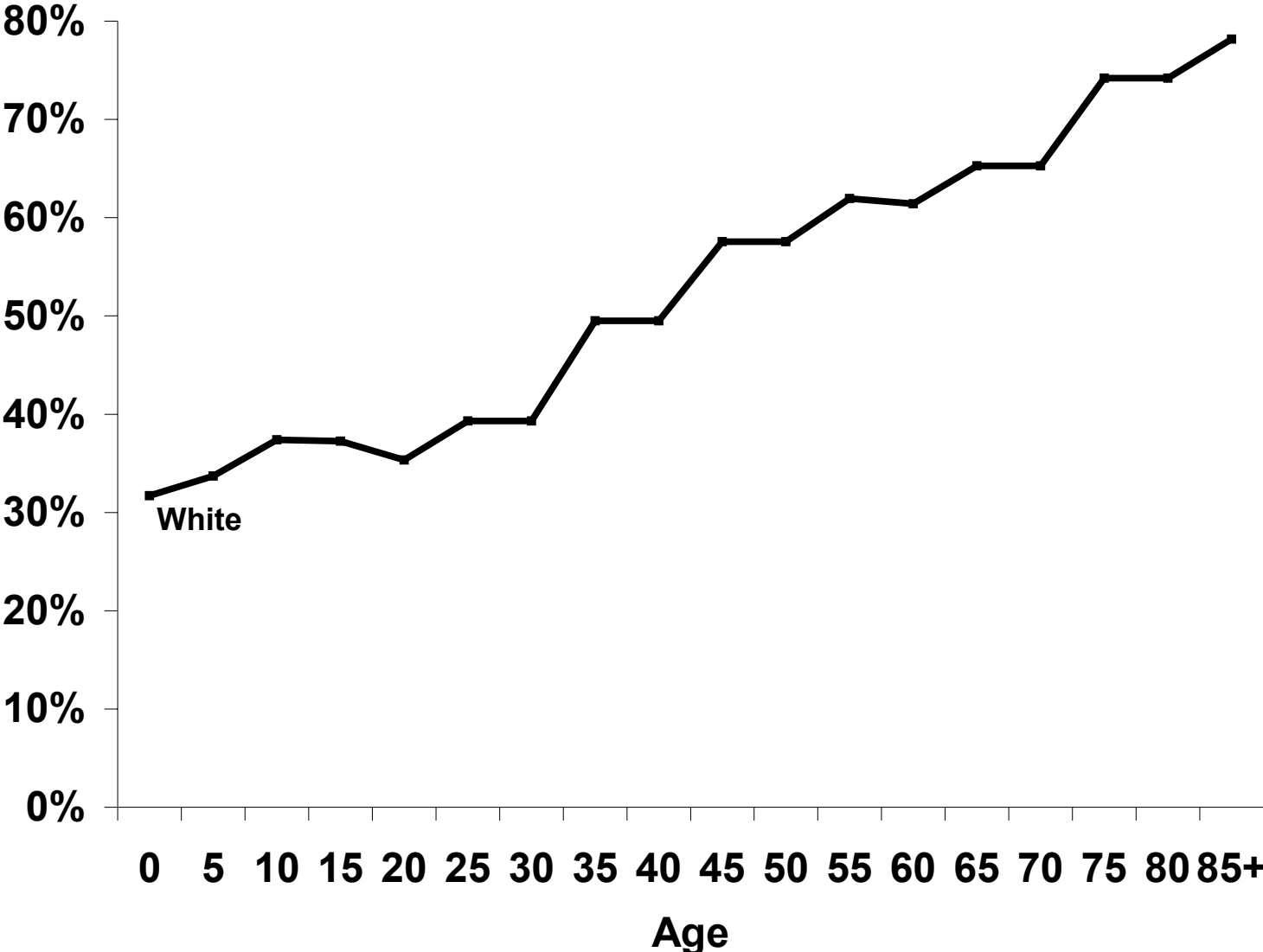


California Births by Ethnicity

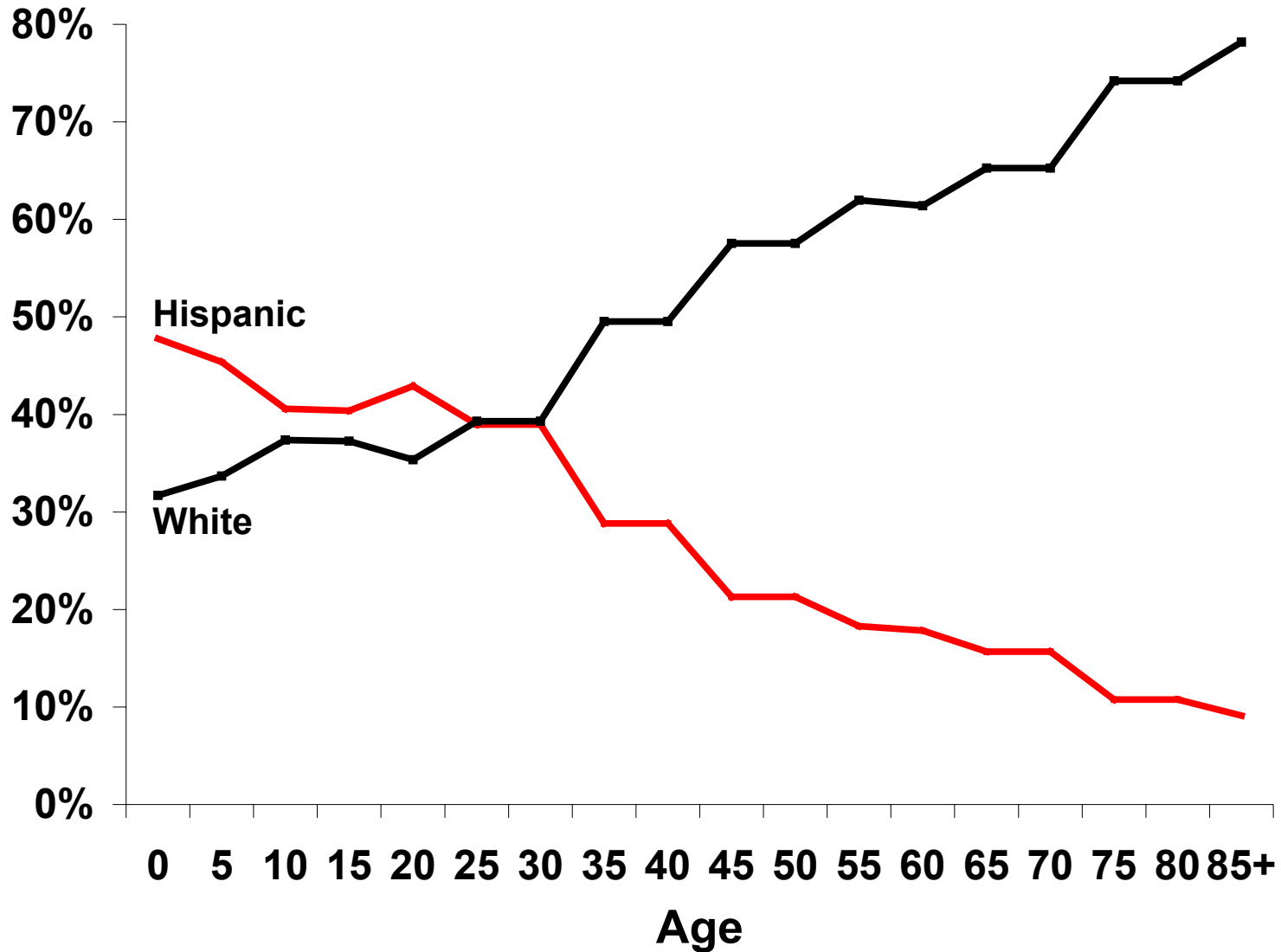


**Birth data foreshadow how
California's population by
ethnicity will change**

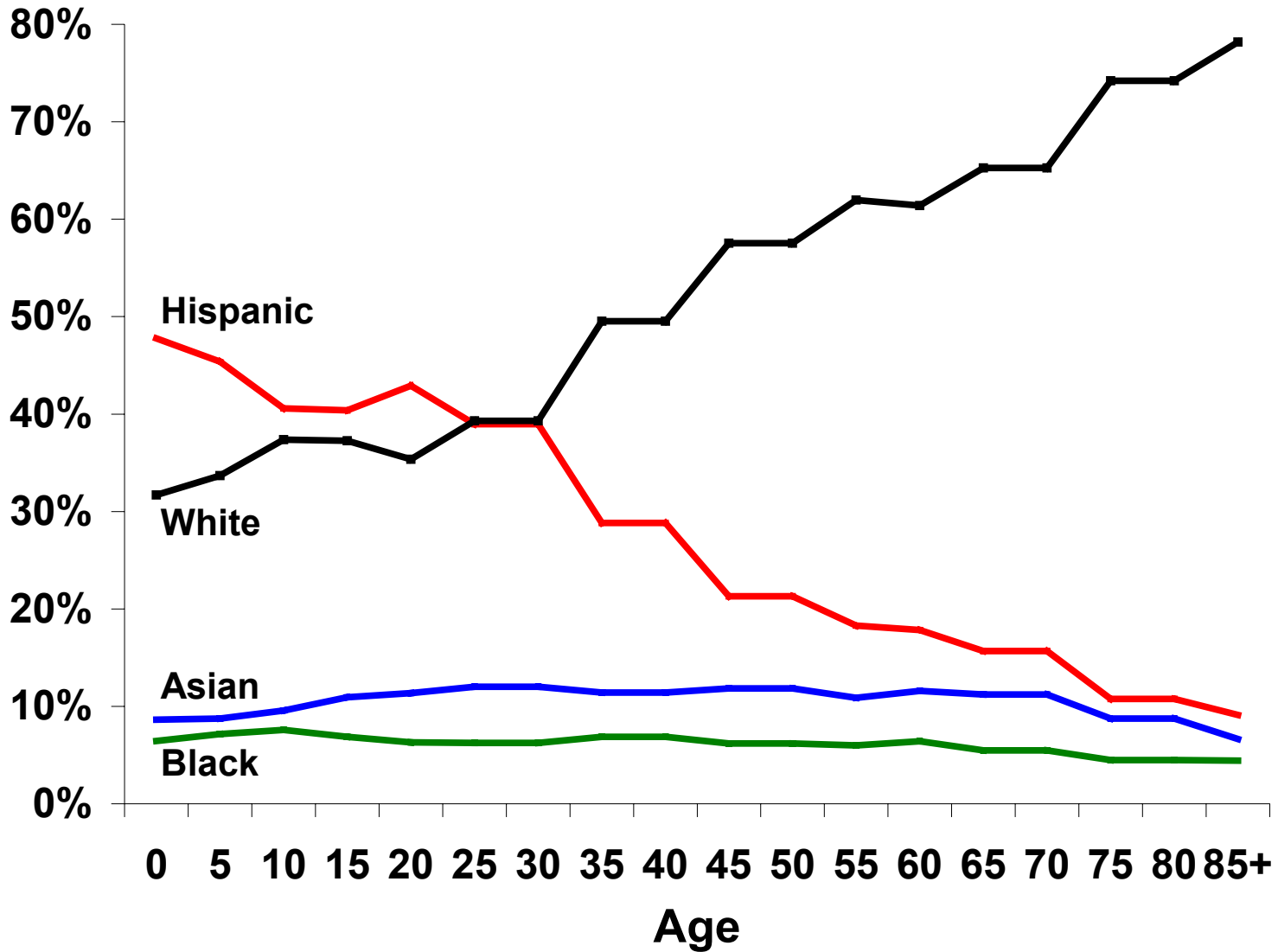
California's Ethnic Groups by Age, 2000



California's Ethnic Groups by Age, 2000



California's Ethnic Groups by Age, 2000



How Changing Ethnic Populations Affect School Districts

- **How will second generation Hispanics (and Asians) intermarry, assimilate, and mirror native born Americans?**
- **Special Language Programs – but only or primarily for immigrant children**
- **Large numbers of Hispanic girls are likely to translate into more births within 20 years**

Housing growth



**3.6 million California housing units
were built during the 1980s and 1990s
(40% increase)**

Forecasting enrollments in districts with housing growth



**Students from
new housing**

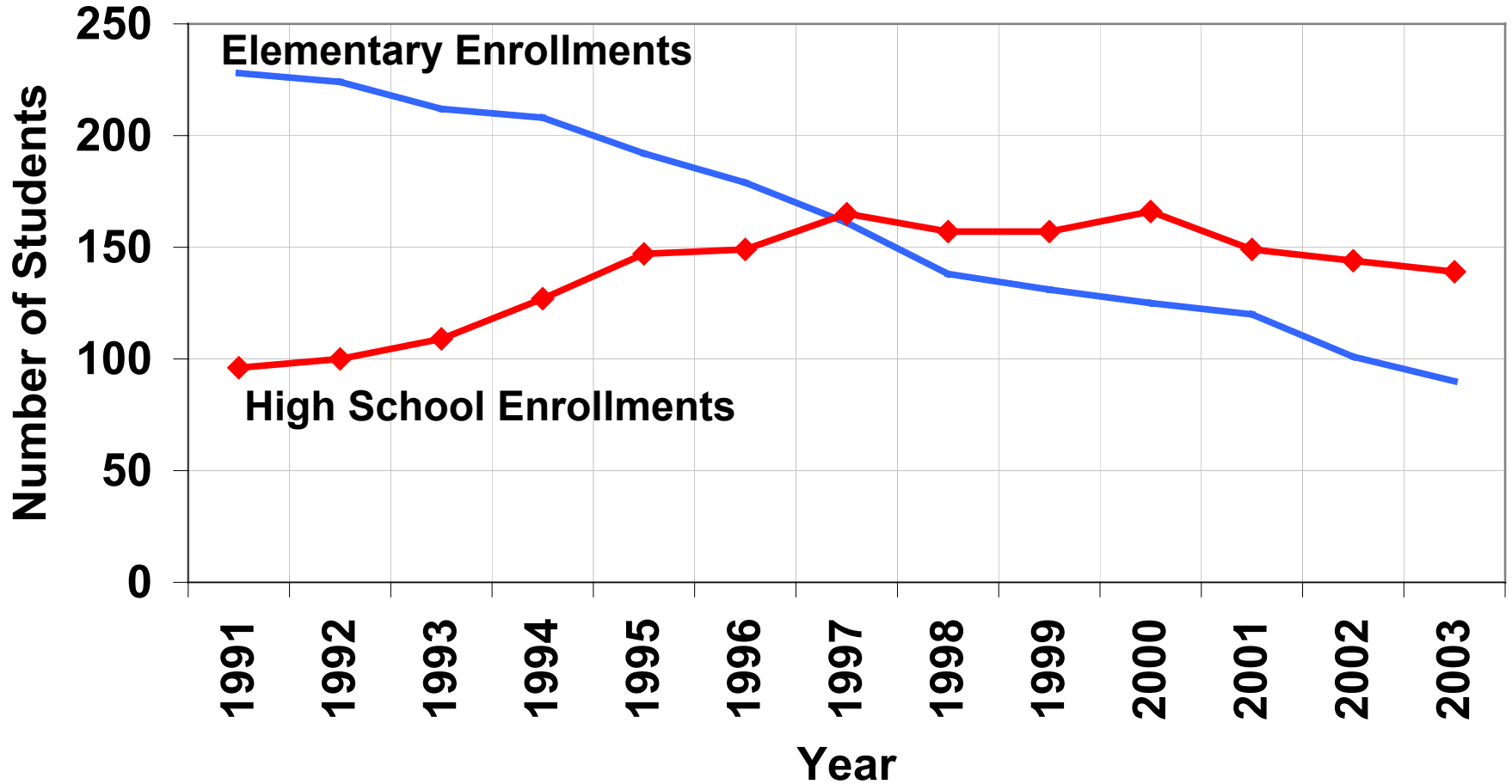


**Students from
older housing**

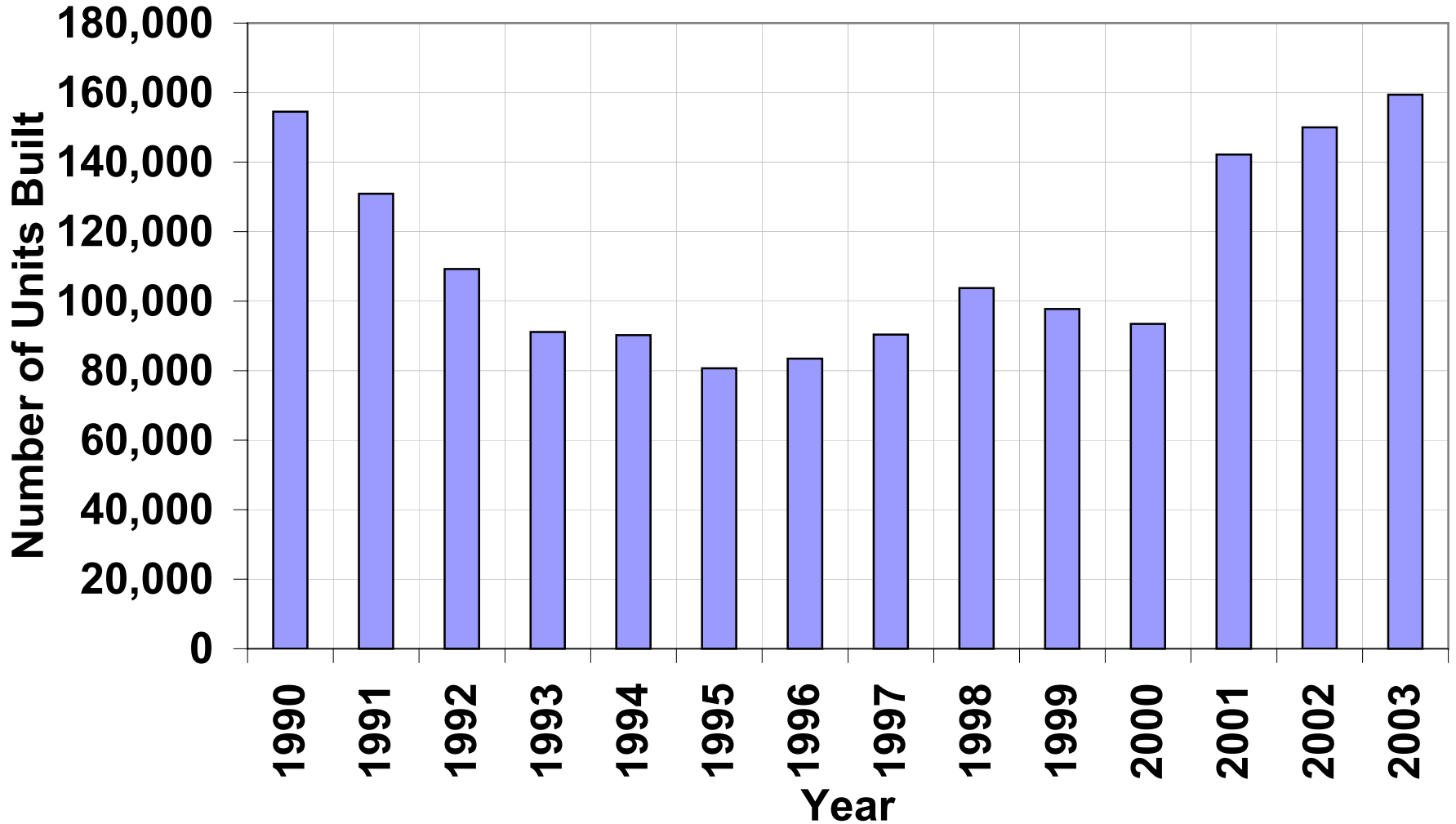
Students in New Housing

- **Tend to be young**
- **Tempered by the age distribution of children in the population**
- **As houses mature, grade distribution of students typically becomes older – kindergarten classes become smaller and smaller**

Enrollments in Columbia Development; Castro Valley Unified; Built 1982-88; 564 Units

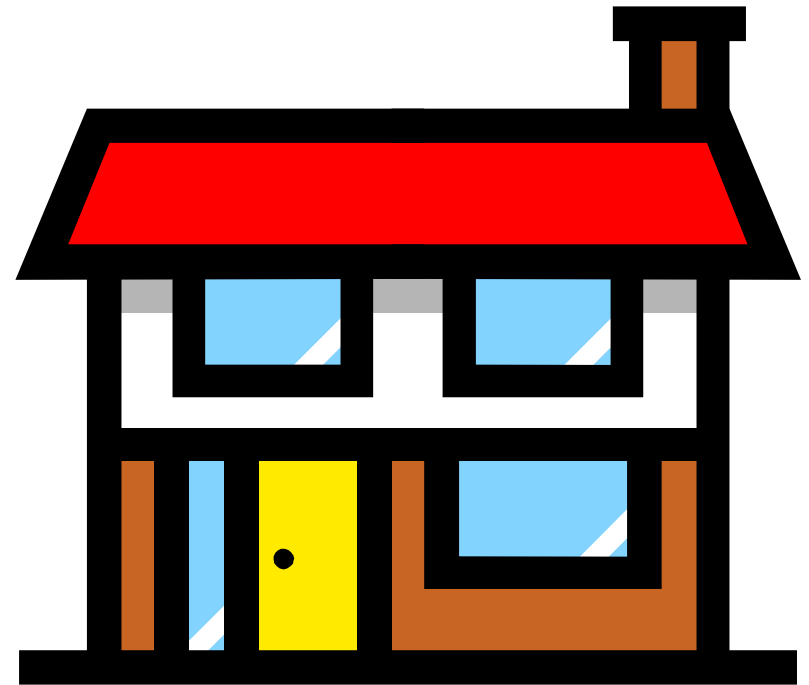


Housing Growth Continues Strong in California



Student Yields

On average, how many students live in a new housing unit?

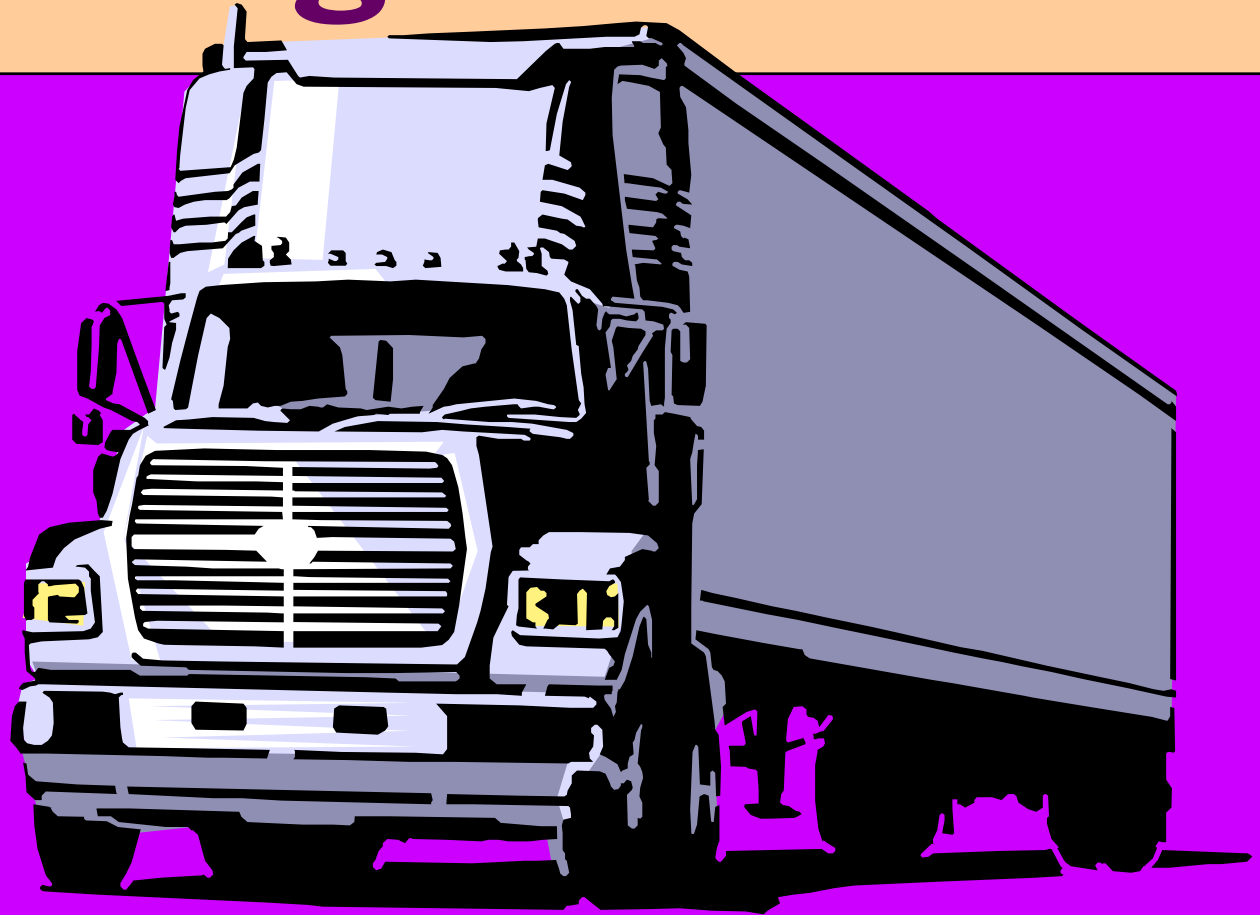


Student yields vary by

- **community**
- **type of housing**
- **age of housing**
- **length of tenure in housing**
- **size and price of housing**

They also vary over time, depending on the number of children in the population

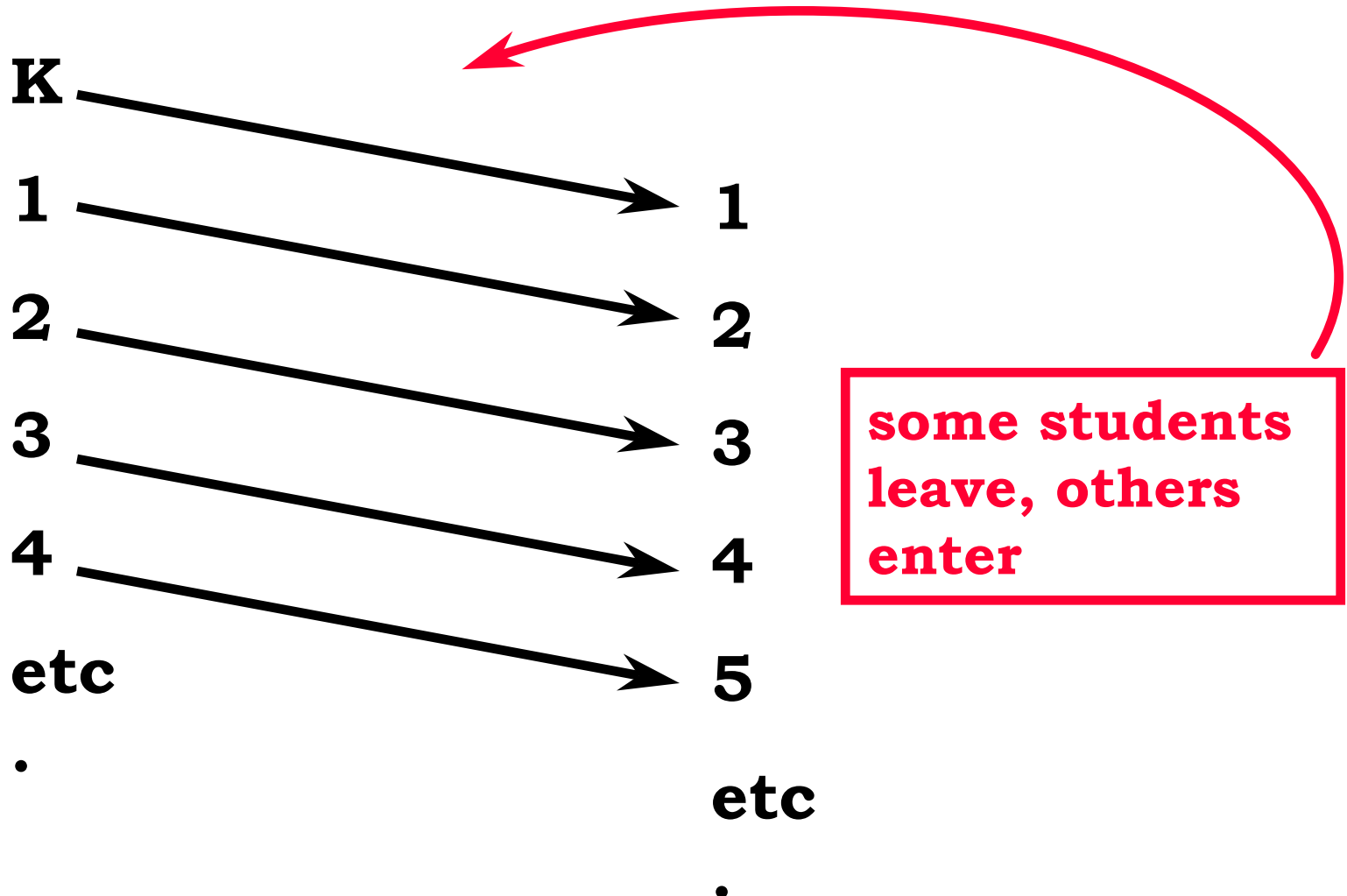
Migration and Housing Turnover



Cohort defined:

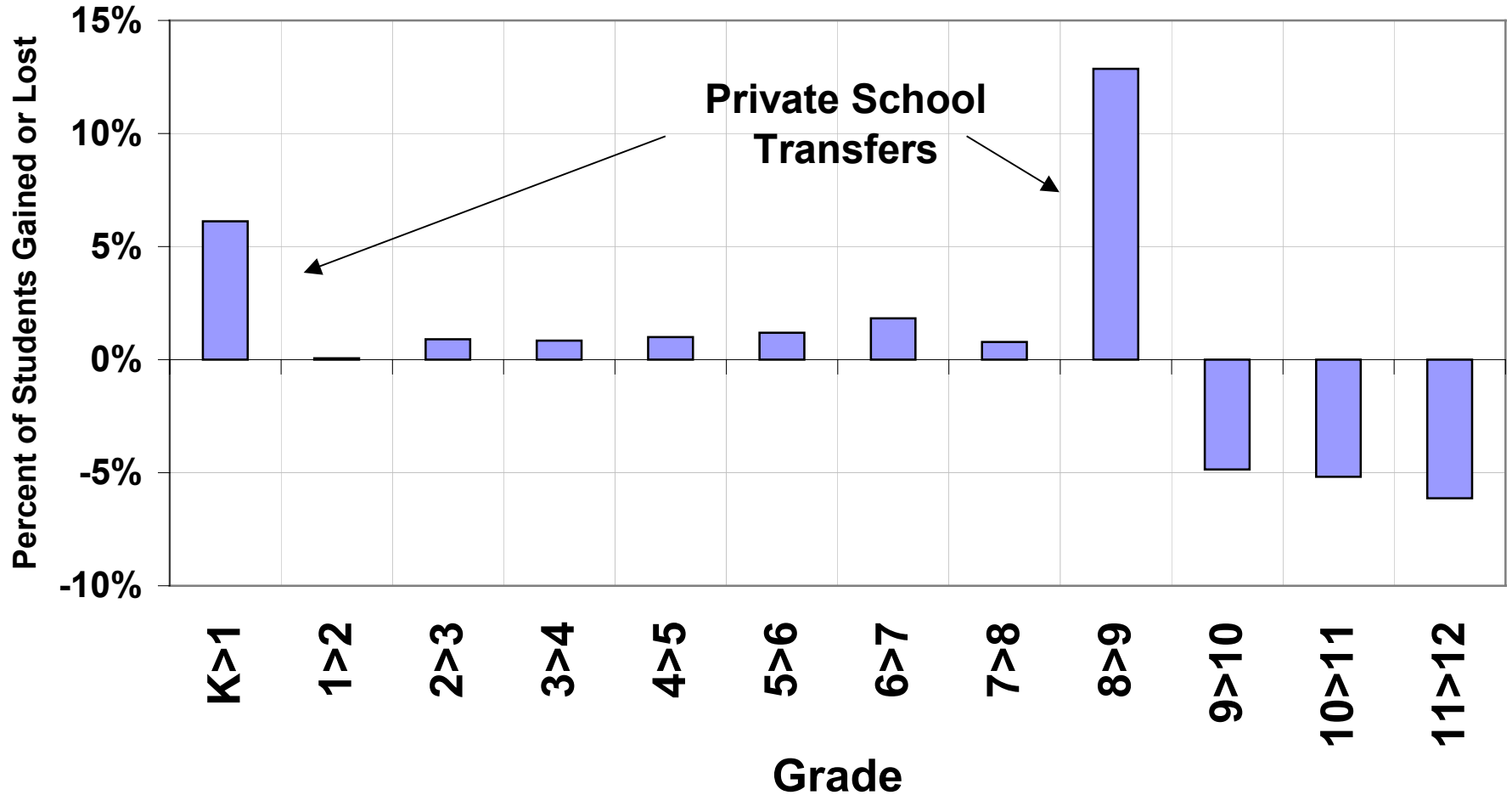
**the group of people who
begin a process at the same
time (e.g. “kindergarten
cohort”)**

Start with today's students by grade, then age them one grade

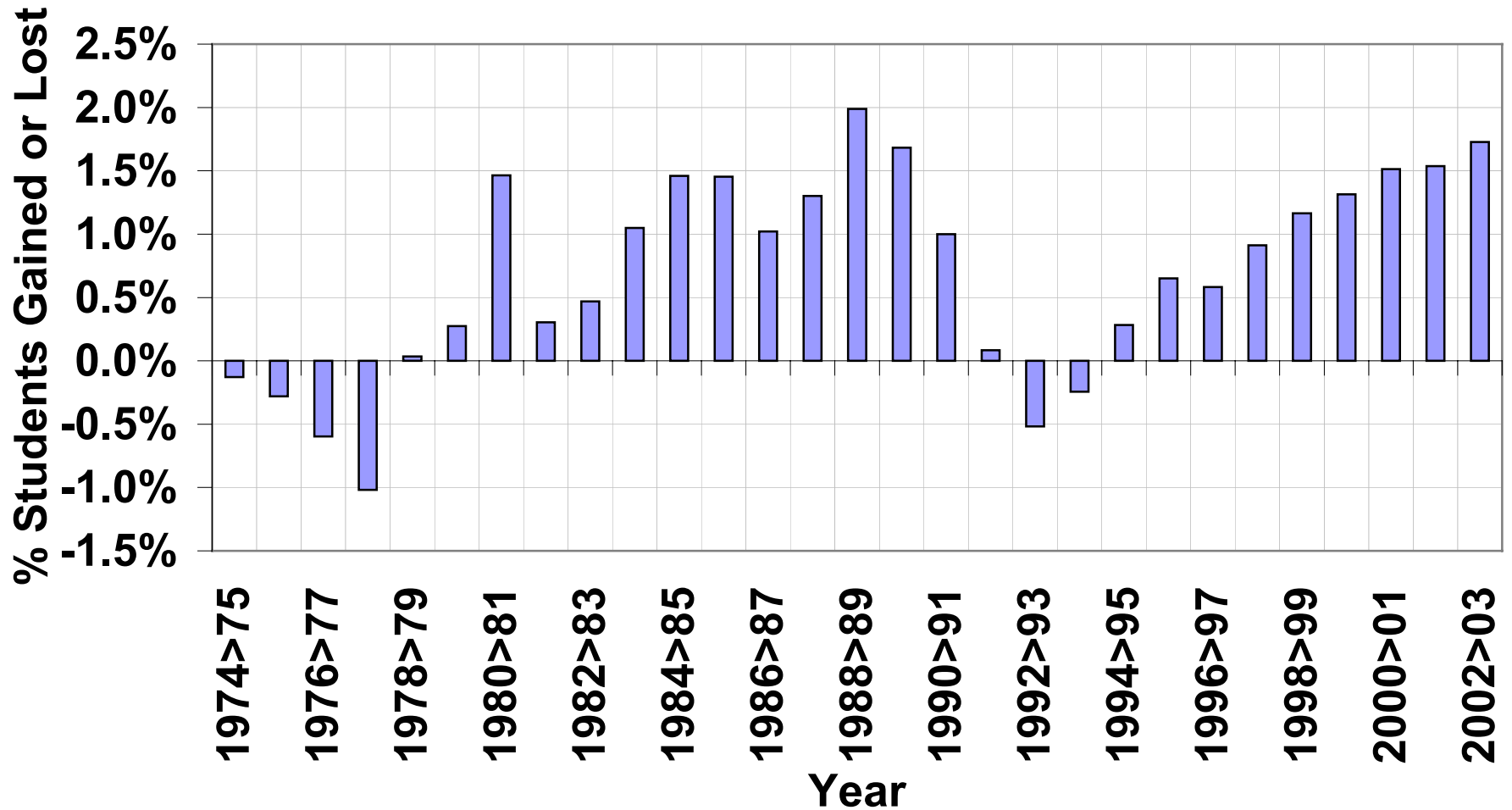


**some students
leave, others
enter**

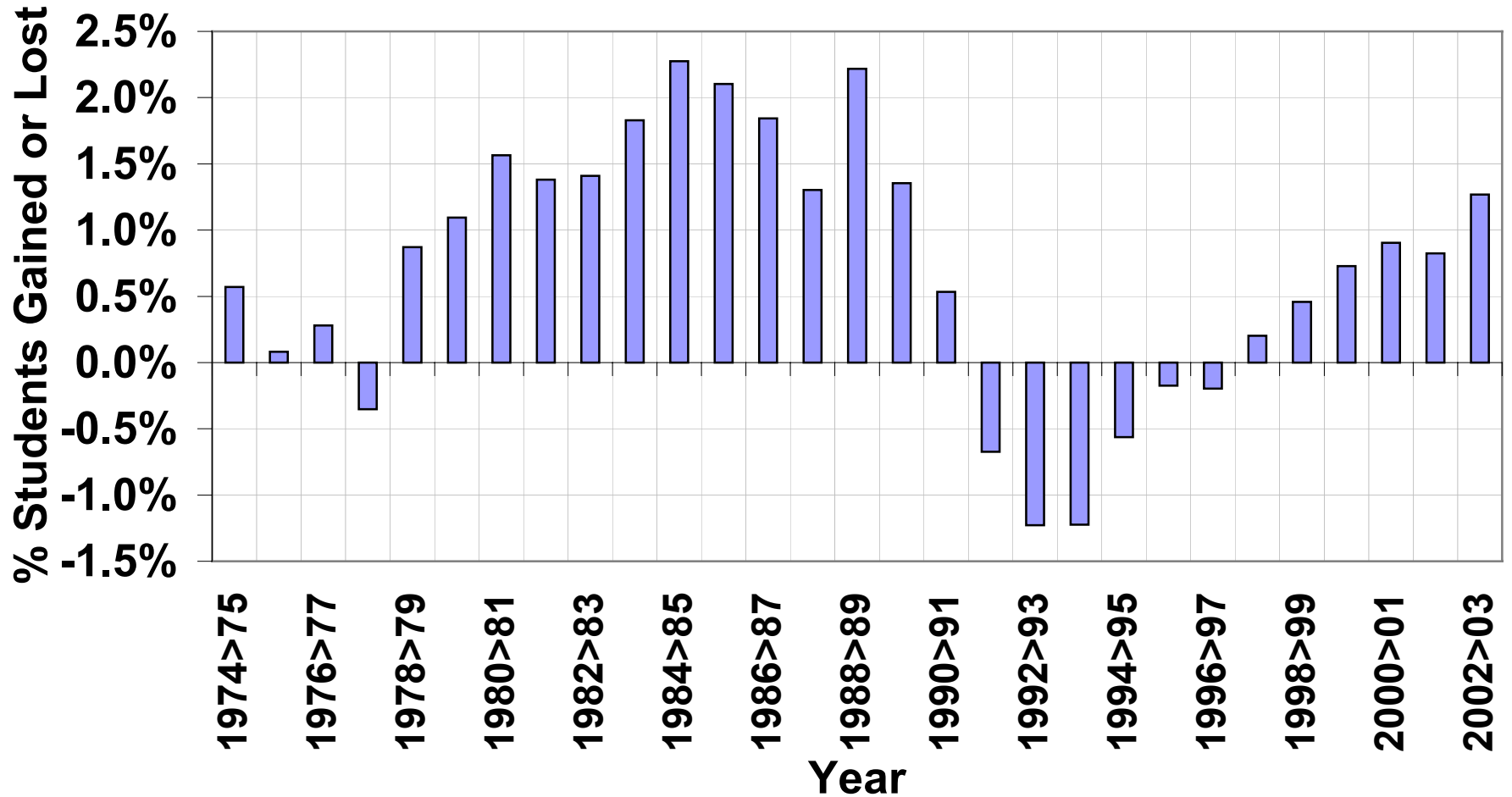
California's Public School Grade Progressions Between Fall 2002 and Fall 2003



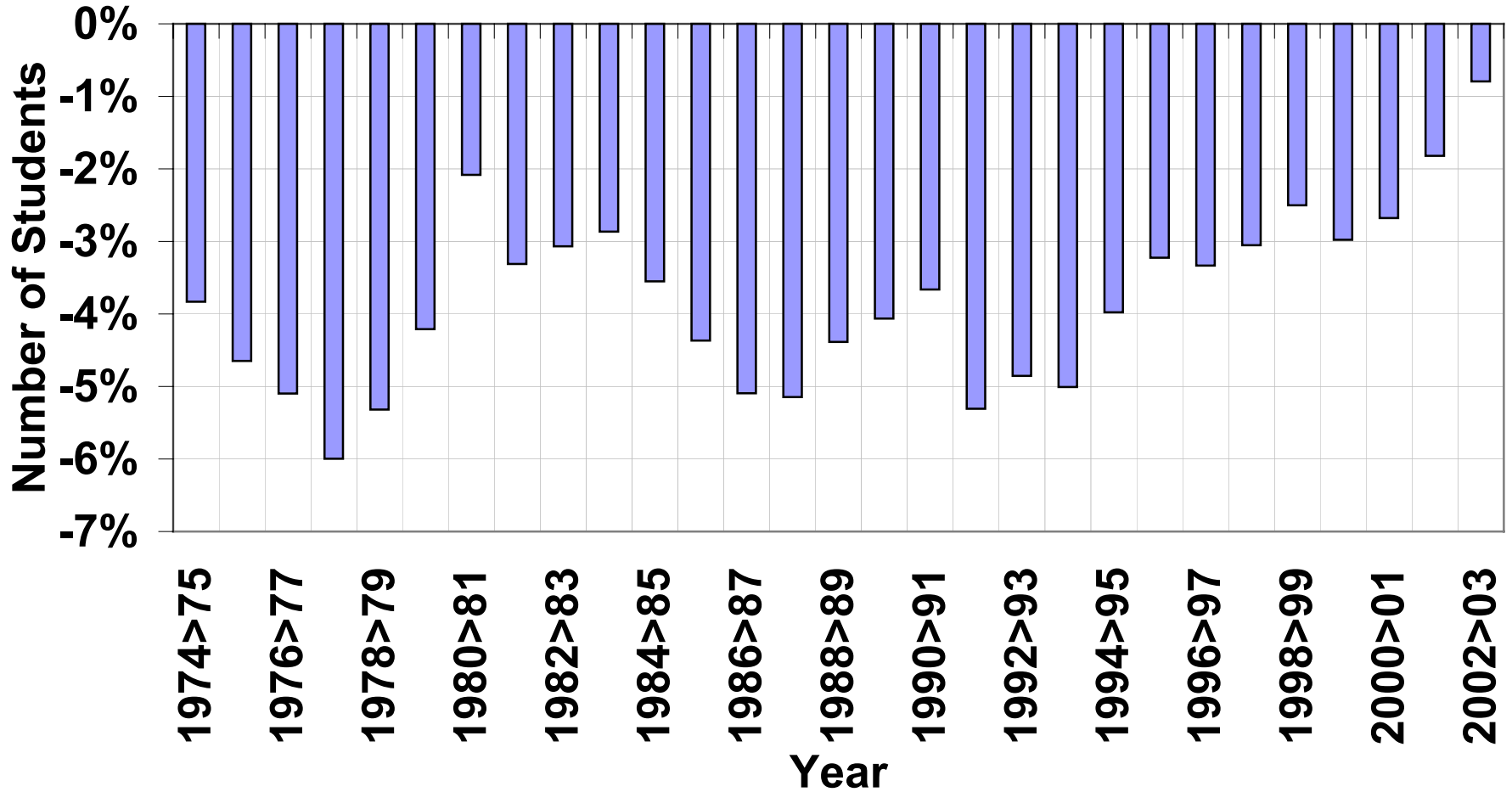
California Elementary Grade Progressions: Grades K-4 into Grades 1-5



California Middle School Grade Progressions: Grades 5-7 into Grades 6-8



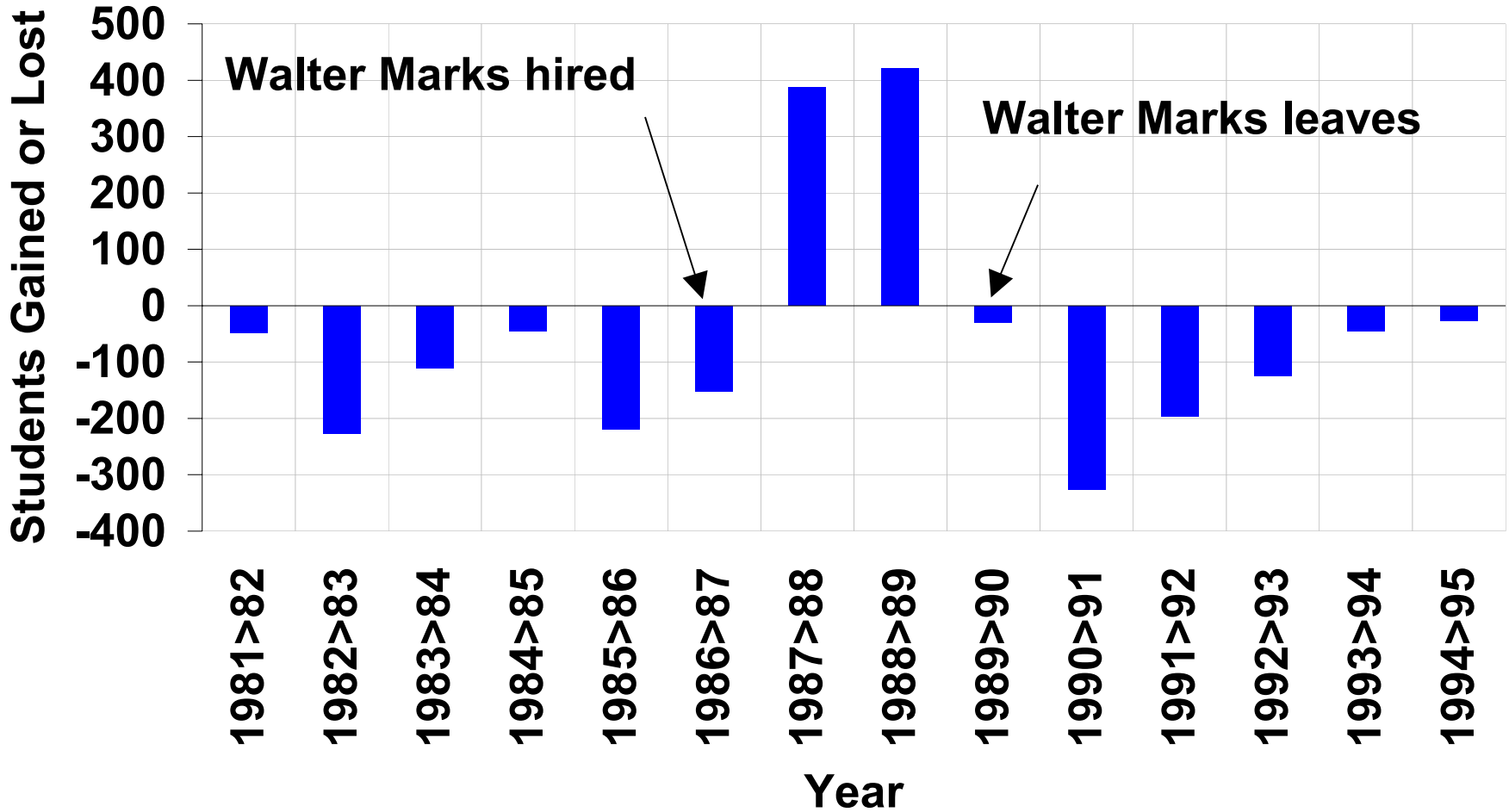
California High School Grade Progressions: Grades 8-11 into Grades 9-12



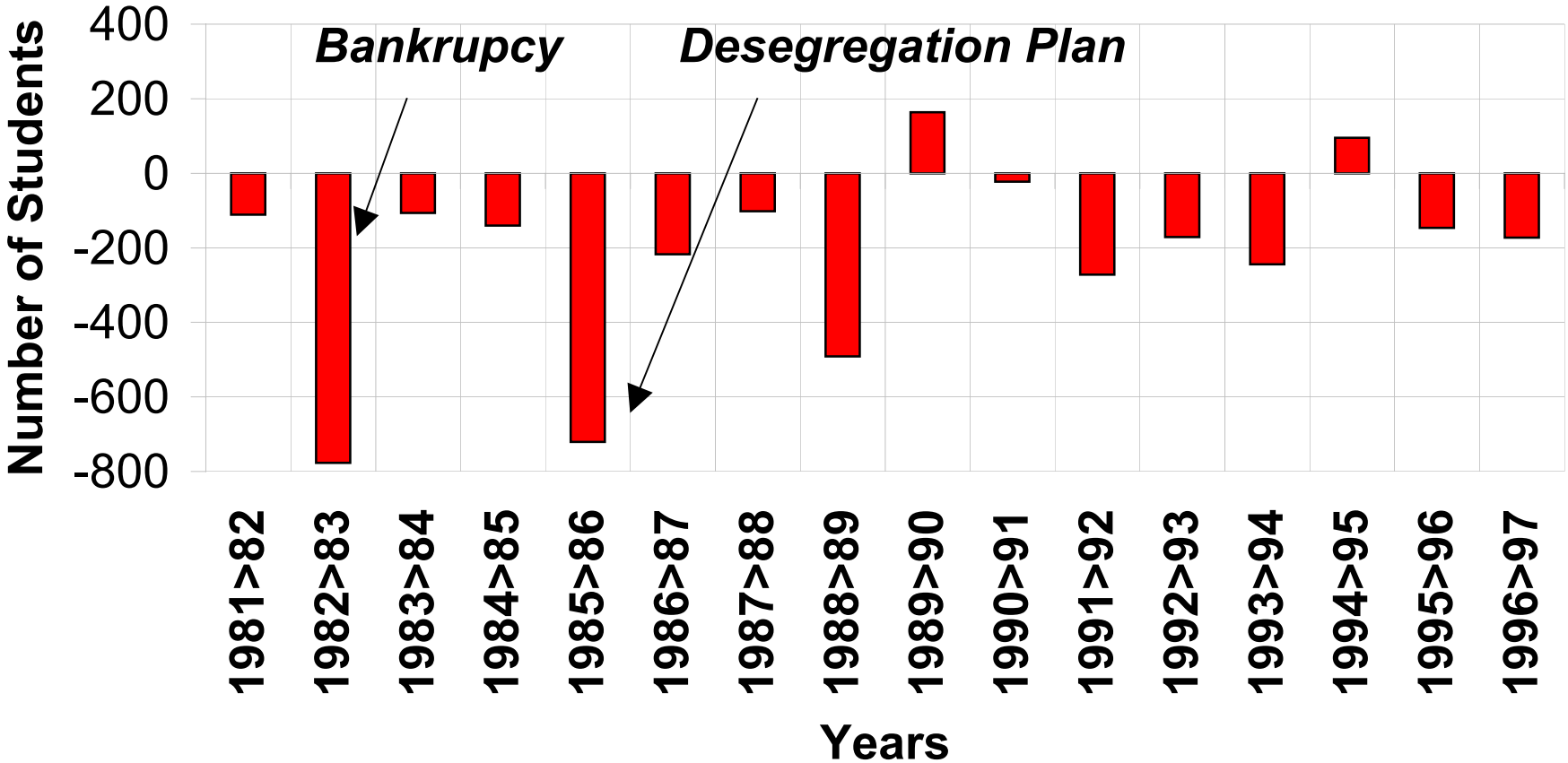
Case Studies

**Illustrations of of why you might be
interested in seeing the grade
progressions from your own district**

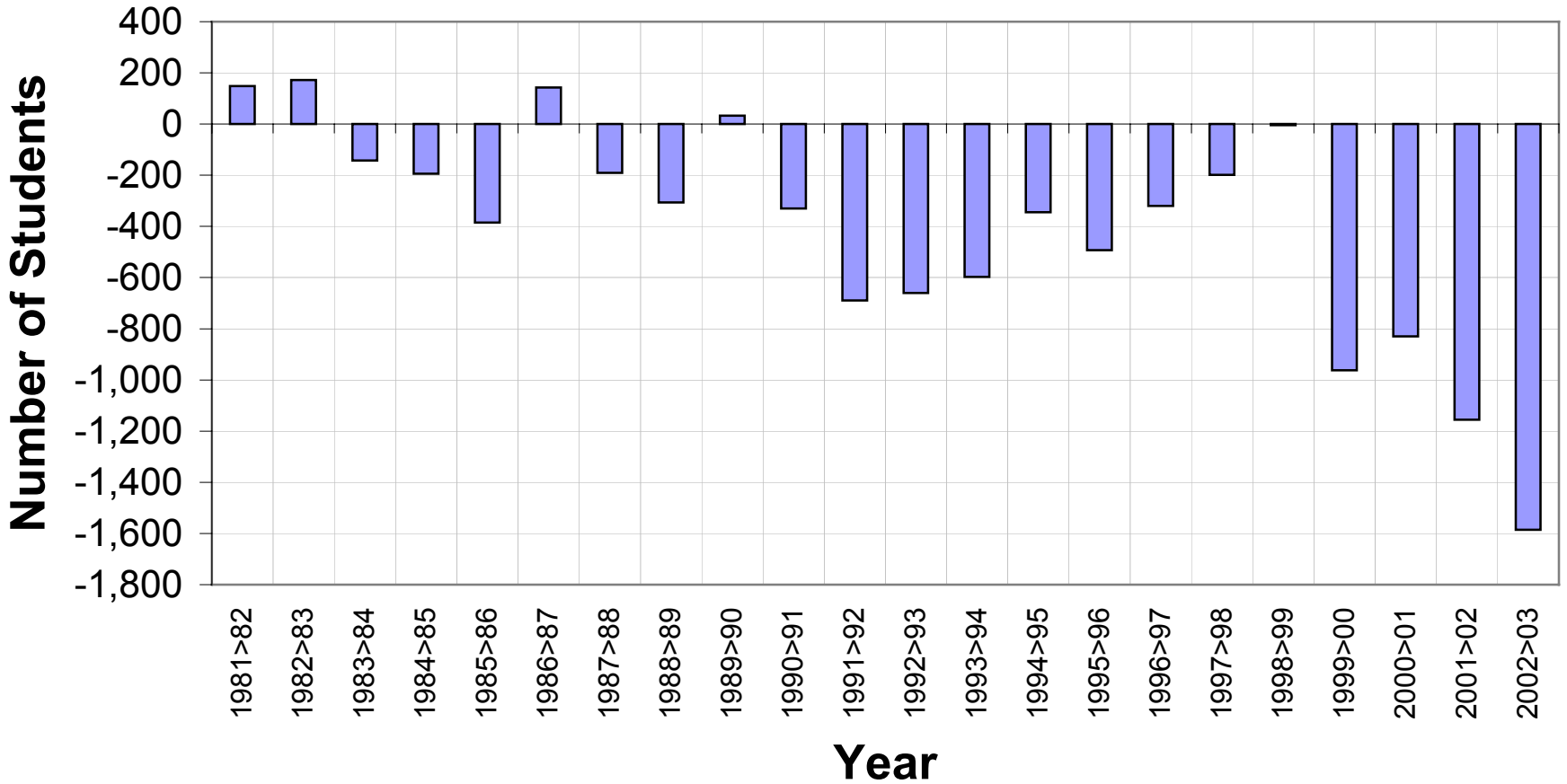
West Contra Costa Unified: Elementary Grade Progression Differences (K-4>1-5)



San Jose Unified School District
Grade Progression Differences
Grades K-7 into Grades 1-8



Oakland Unified
Elementary Grade Progressions
Grades K to 4 into Grades 1 to 5
Includes Charters



If you have declining enrollments, it doesn't necessarily mean that students are leaving your district....look at the grade progressions to give you context to your current enrollment situation

Questions???

What We've Covered Today

- **How California enrollment trends are changing**
- **The changes in births: both overall numbers and by ethnicity**
- **Housing growth effects**
- **Migration effects: the value of looking at grade progressions**

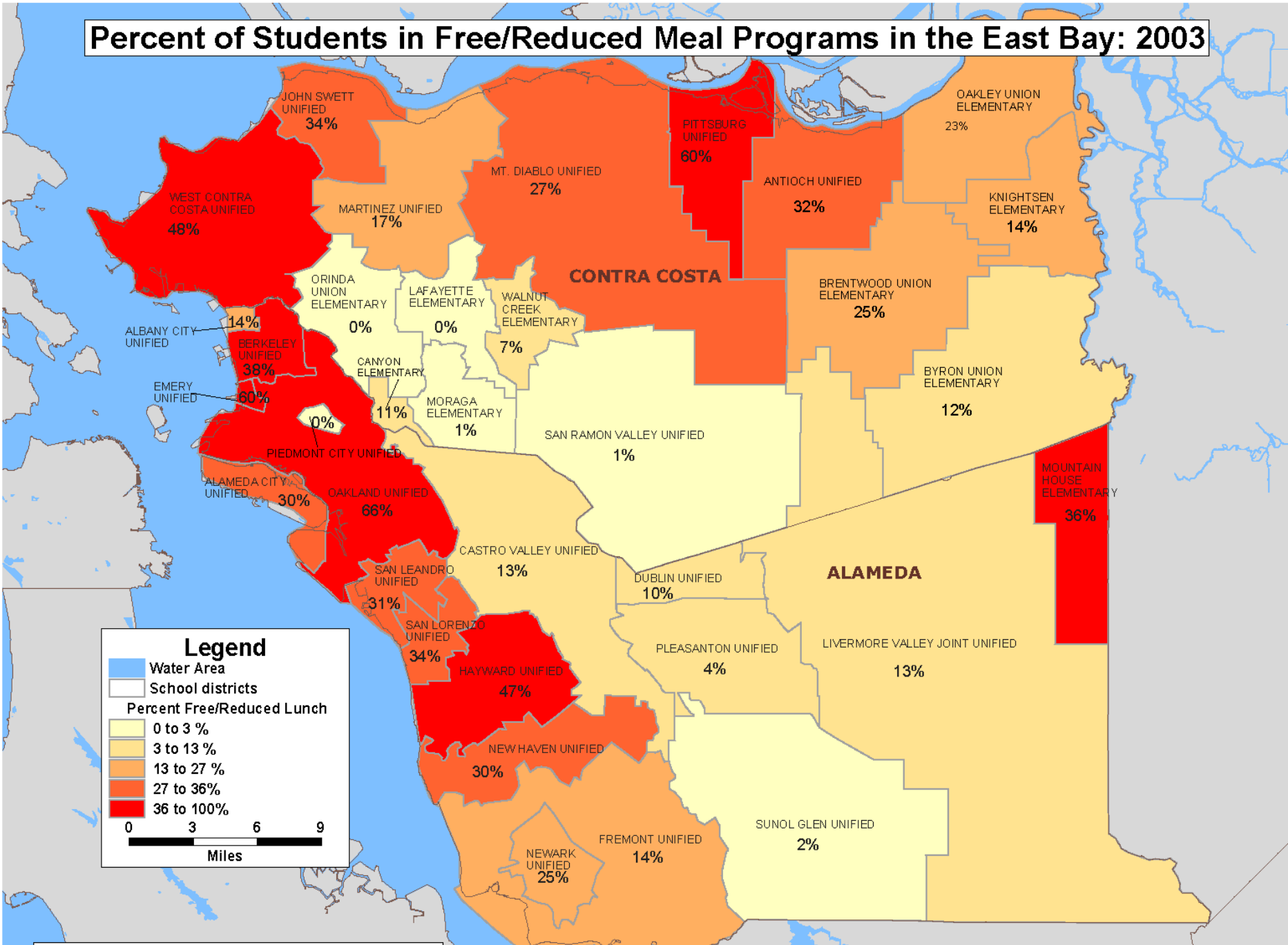
Free and Reduced Lunches



Free and Reduced Lunches

- **Children eligible for free and reduced lunches must have incomes below 185% of the poverty line: For a family of four, household income must be below \$35,000.**
- **Almost half of California's students receive free or reduced lunches.**

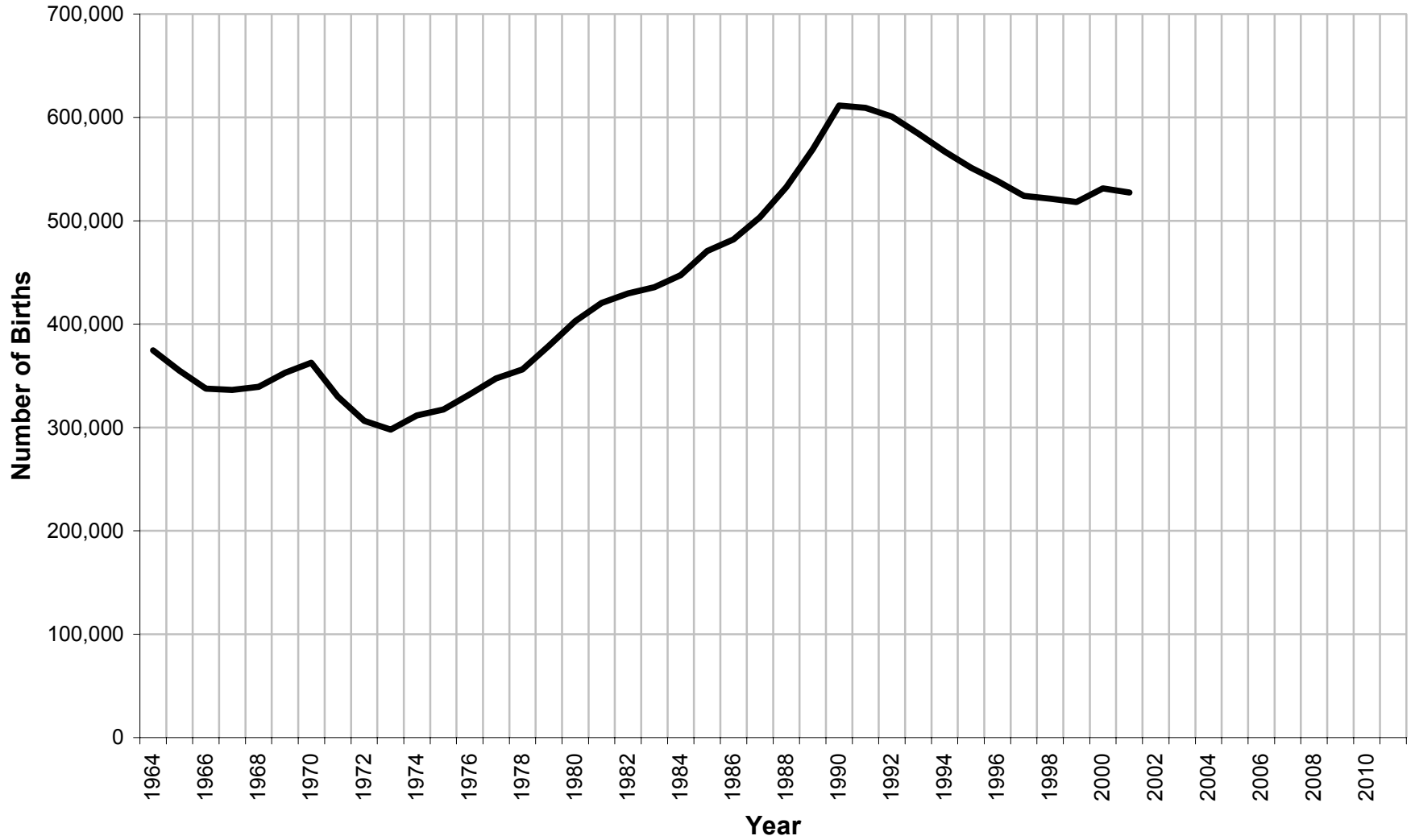
Percent of Students in Free/Reduced Meal Programs in the East Bay: 2003



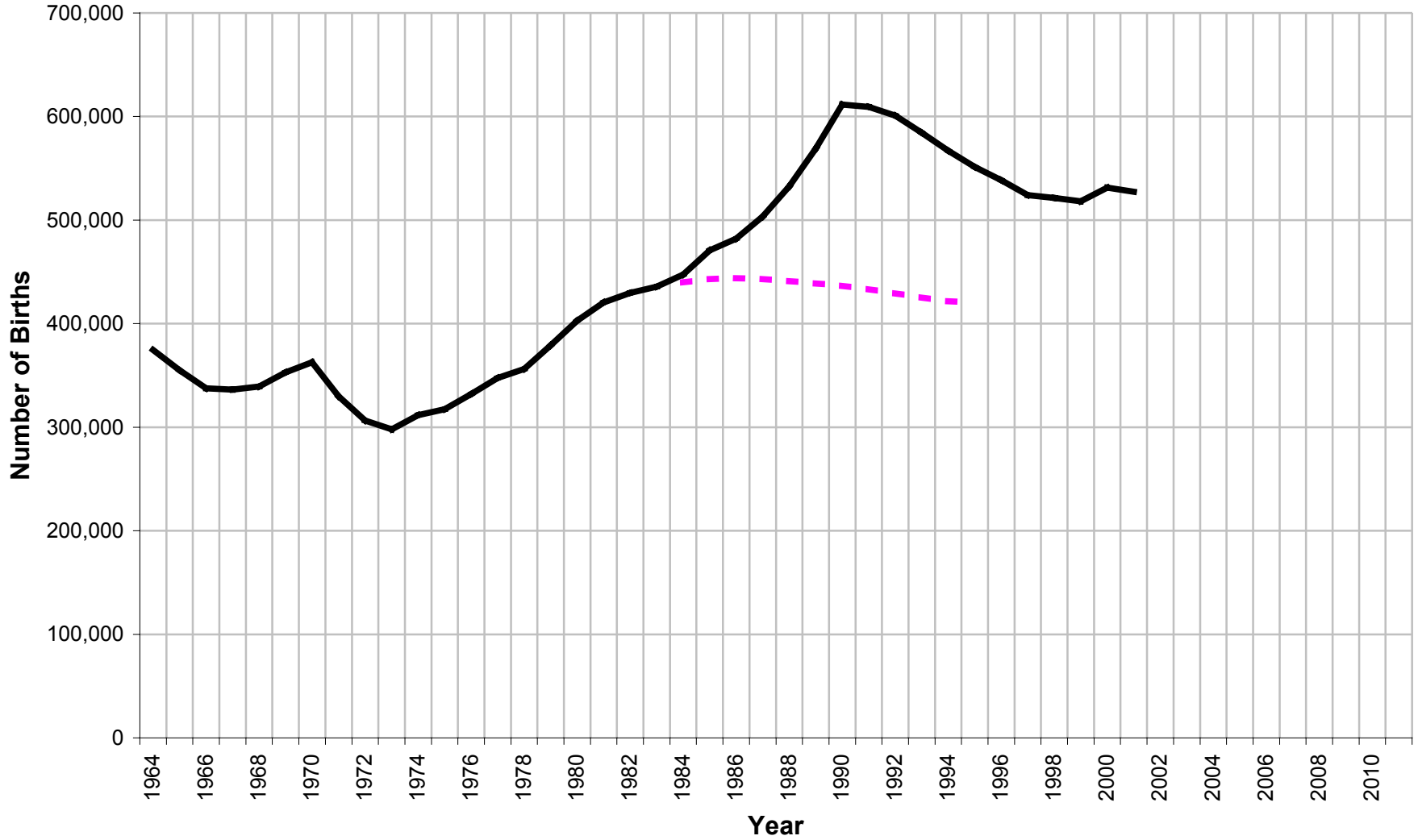
**Do you want to forecast
kindergarten enrollment
beyond the birth data?**



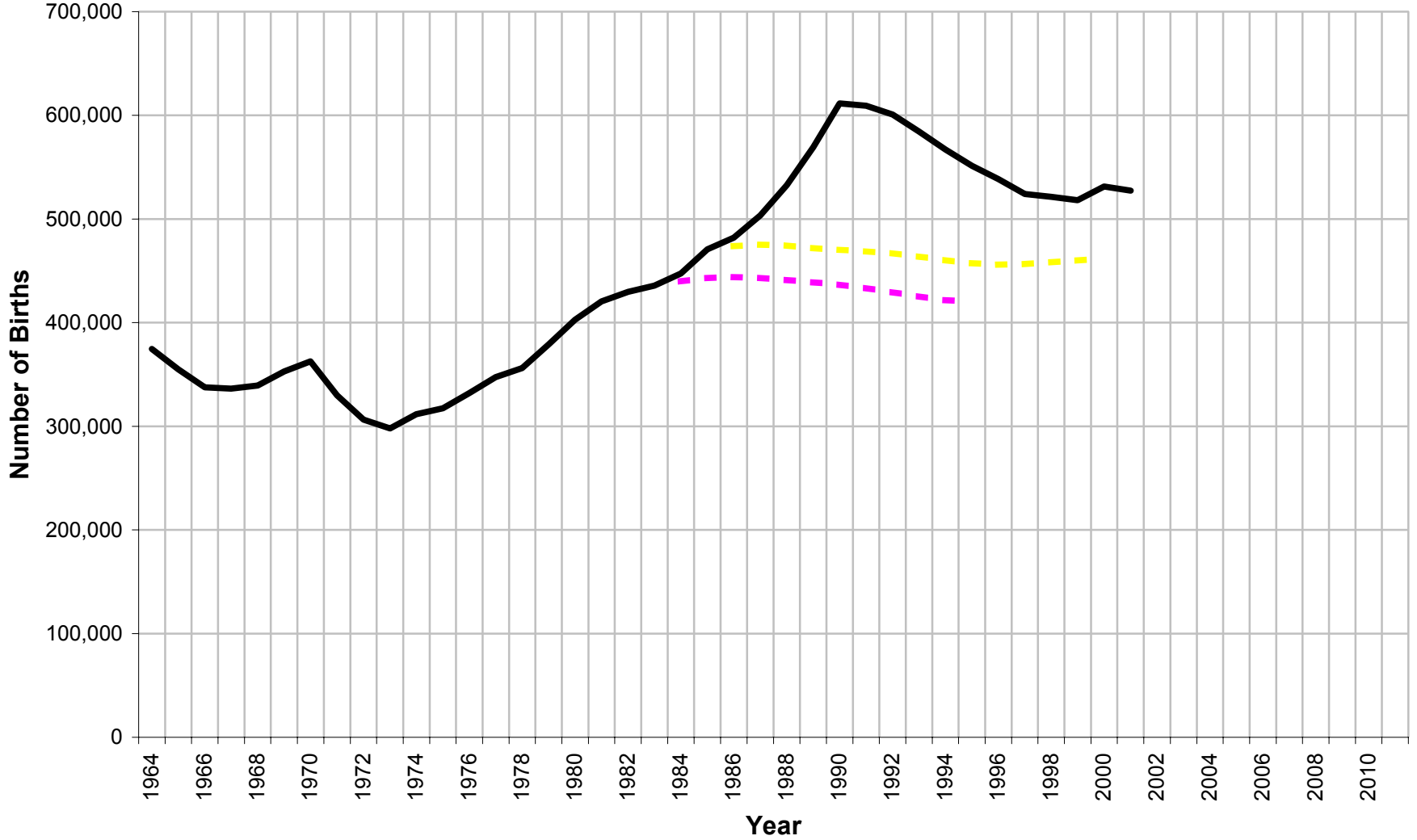
California Birth Forecasts by State Demographers



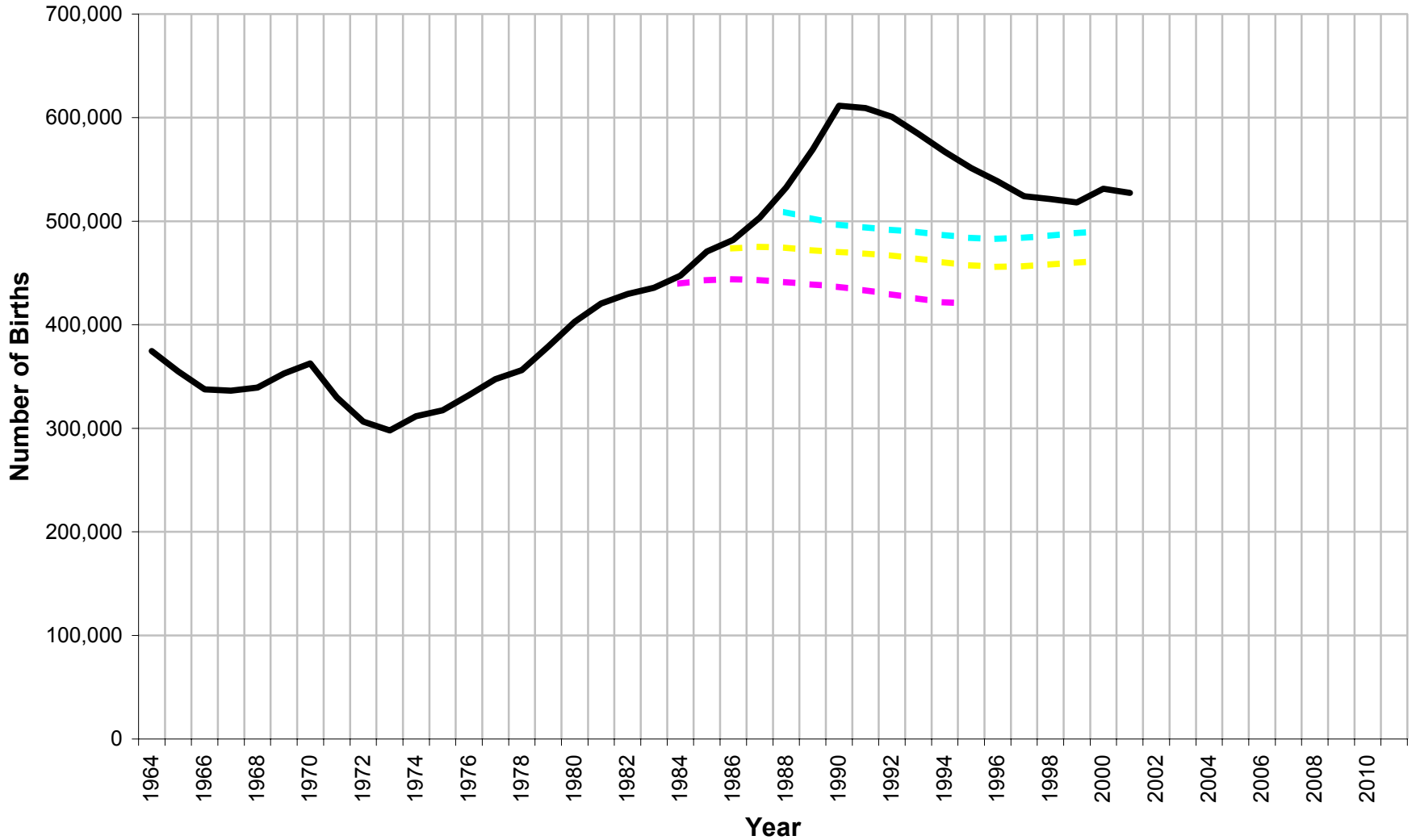
California Birth Forecasts by State Demographers



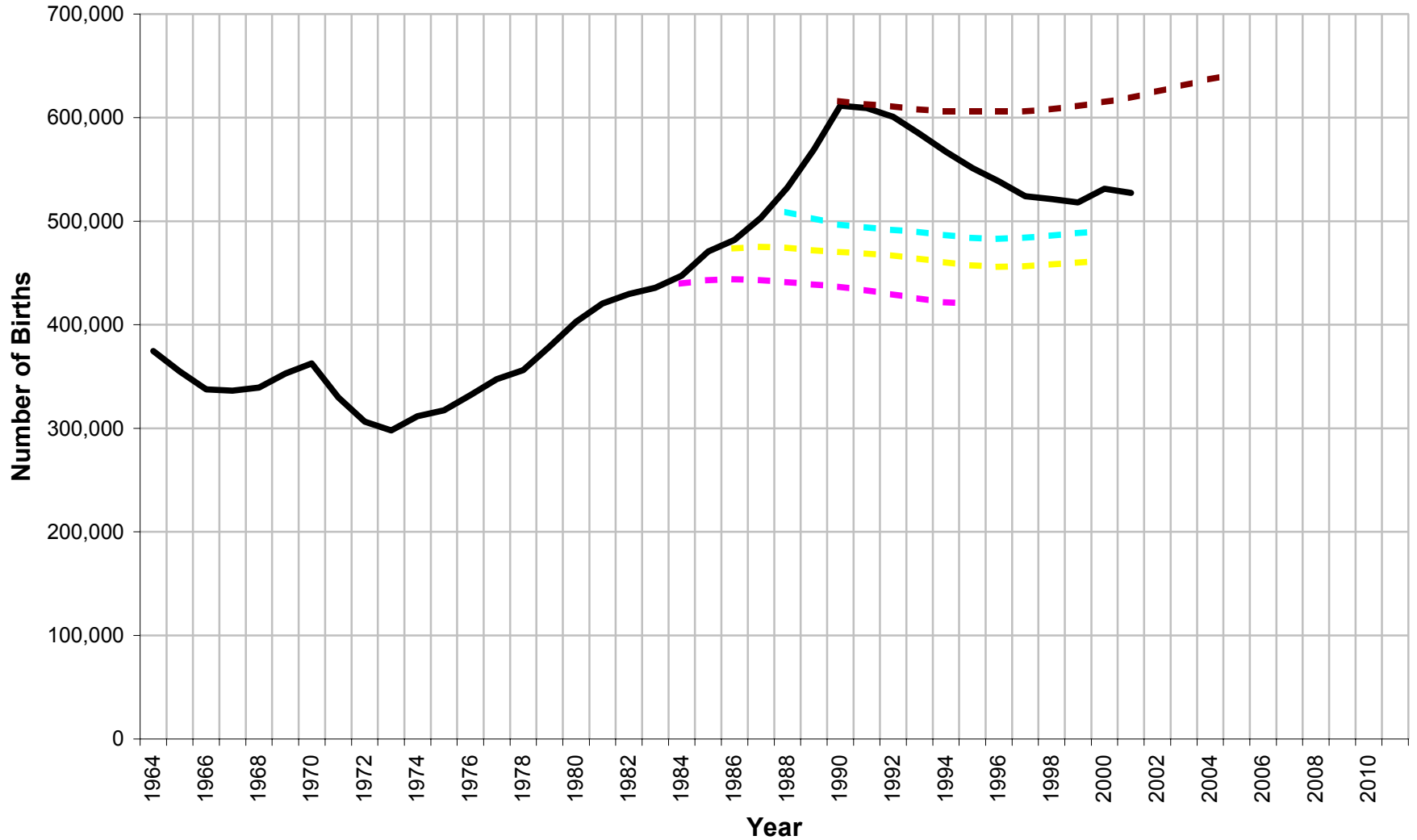
California Birth Forecasts by State Demographers



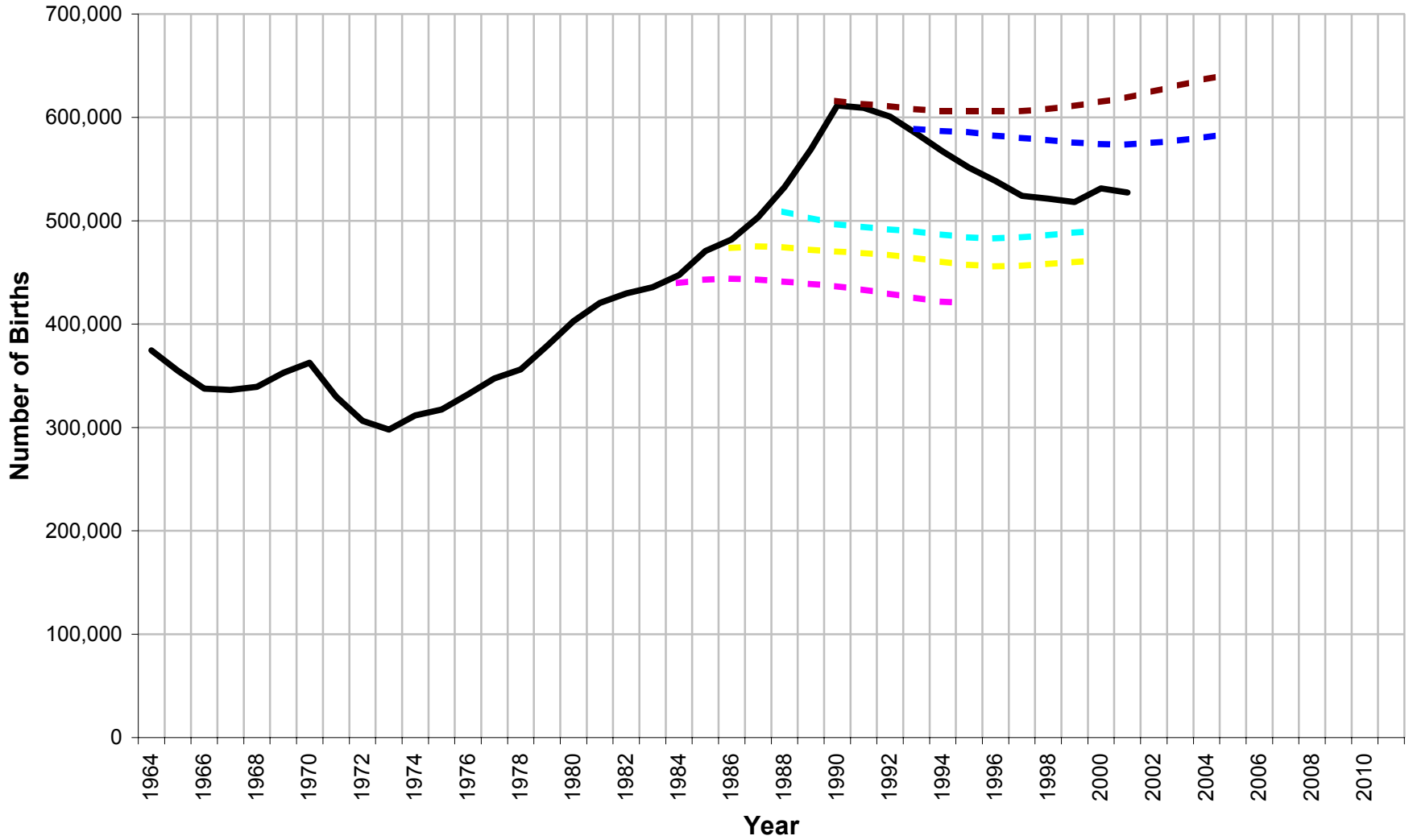
California Birth Forecasts by State Demographers



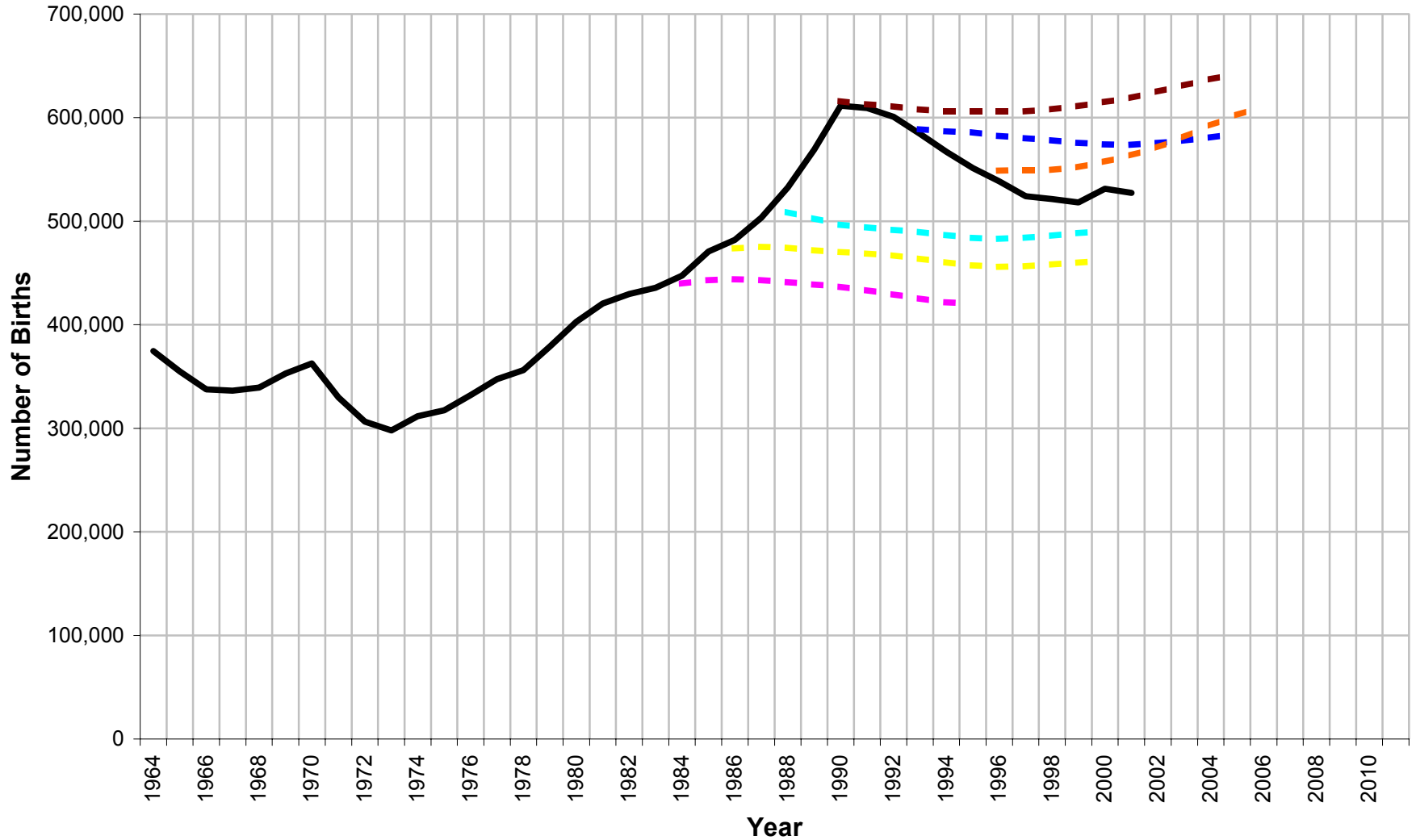
California Birth Forecasts by State Demographers



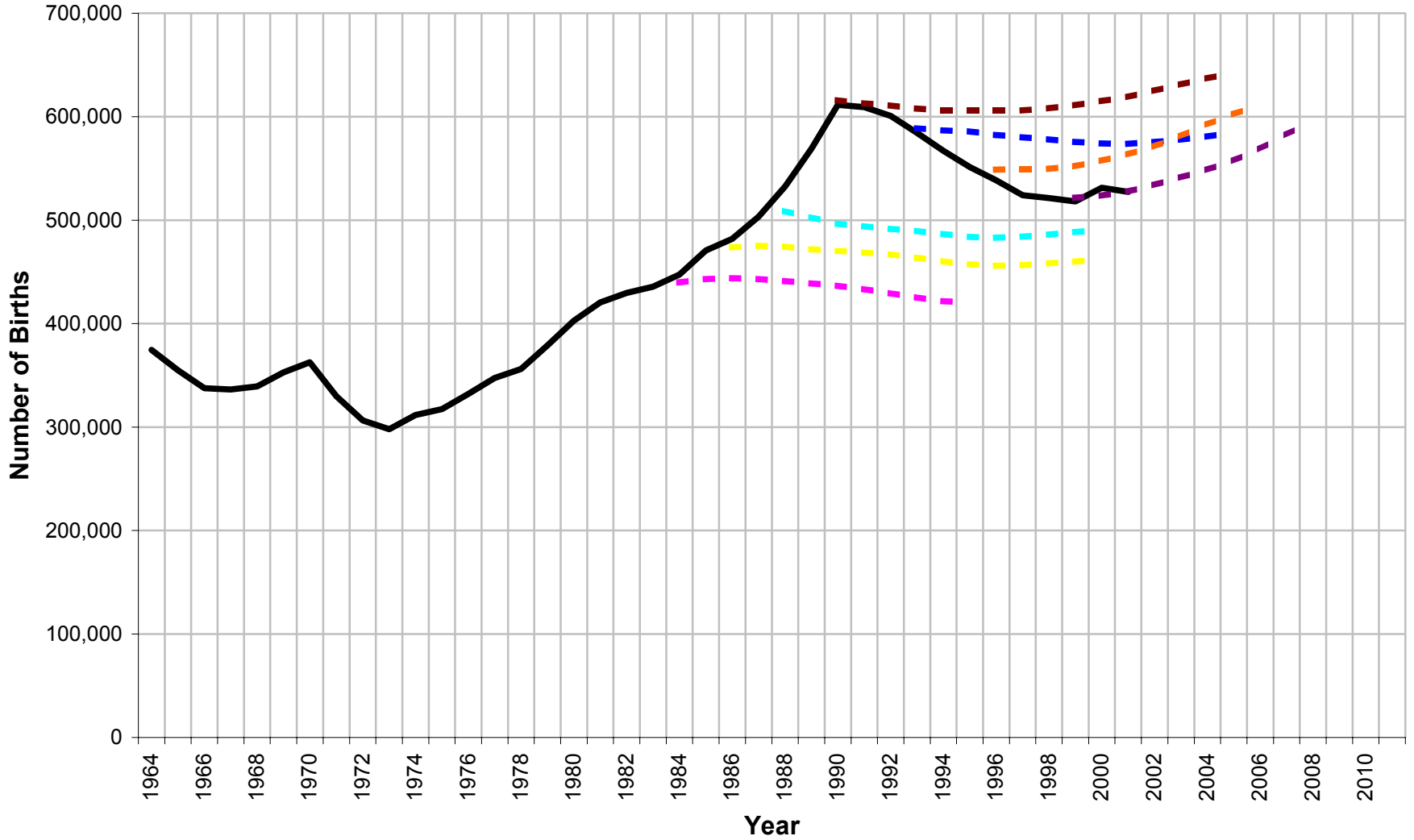
California Birth Forecasts by State Demographers



California Birth Forecasts by State Demographers



California Birth Forecasts by State Demographers



Sources of birth data

- **California Department of Health Services:**
Births by Zip Code 1989 - 2003, Births by county
- **California Dept. of Finance, Population Research Unit:** **County birth forecasts**
- **Some County Health Departments:** **Births by Census tract, TAZ, Zip Code, City**